



Mohawk Group

# mix & match

CHAPTERS OF INSPIRATION

Shark - Viper

Products Brochure



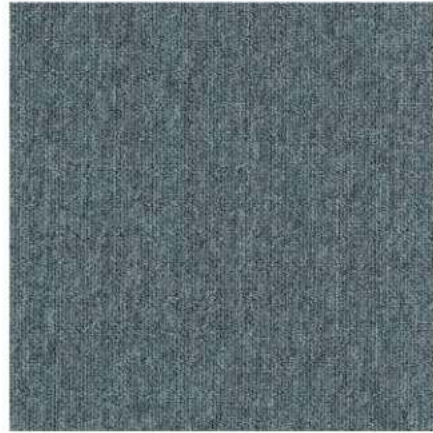
“

Experience Mohawk Group for groundbreaking products that gratify harmony in every corner while adding grace to your space"

 Mohawk Group

# Shark

Carpet Tiles



Product: Shark-559



Product: Shark-752



Product: Shark-926



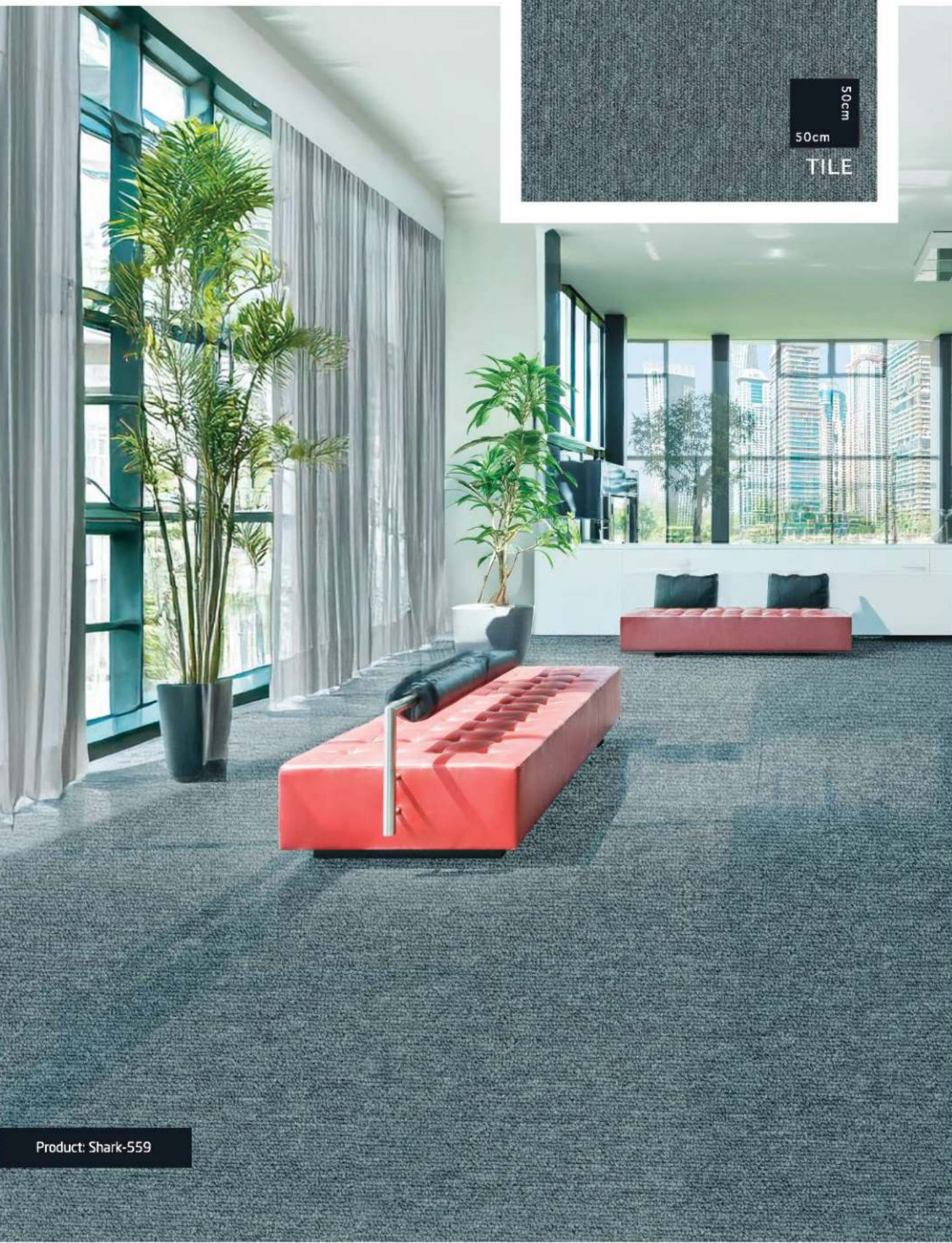
Product: Shark-980



Product: Shark-990



# Shark Carpet Tiles



Product: Shark-559



# Shark Carpet Tiles



Product: Shark-752



# Shark Carpet Tiles



Product: Shark-926



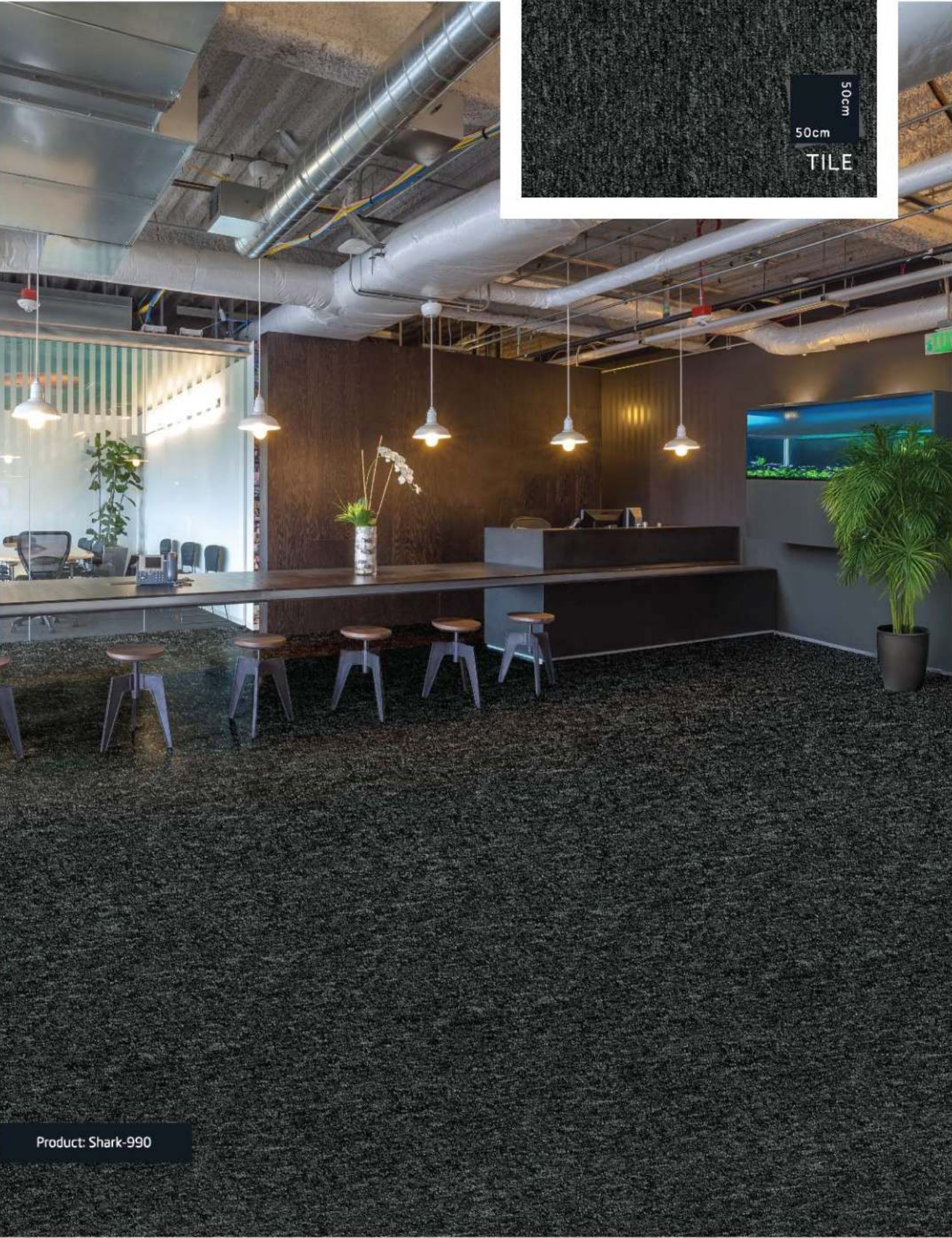
# Shark Carpet Tiles



Product: Shark-980



# Shark Carpet Tiles



Product: Shark-990

 Mohawk Group

# Viper

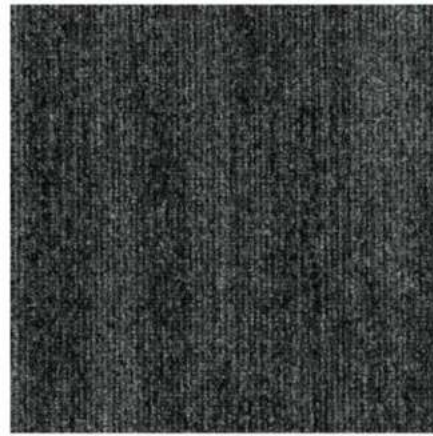
Carpet Tiles



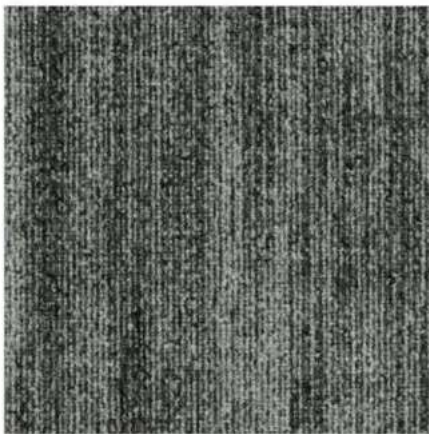
Product: Viper - 559



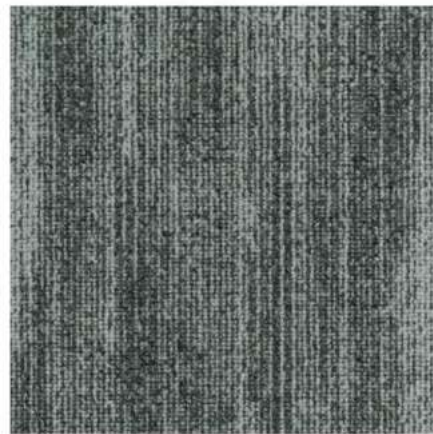
Product: Viper - 733



Product: Viper - 979



Product: Viper - 927



Product: Viper - 935



# Viper Carpet Tiles



Product: Viper - 559



# Viper Carpet Tiles



Product: Viper - 733

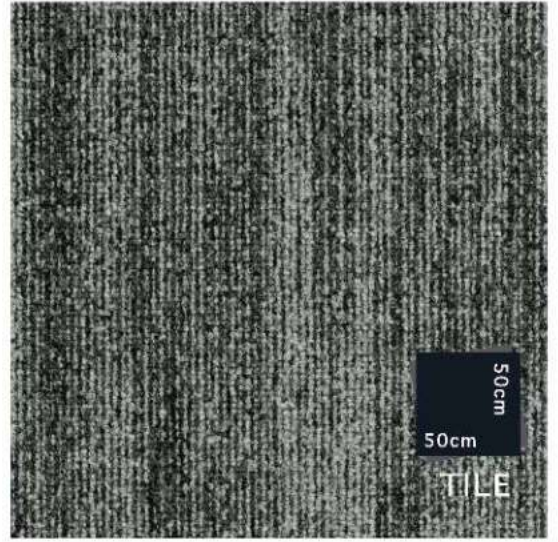


# Viper Carpet Tiles





# Viper Carpet Tiles



Product: Viper - 927



# Viper Carpet Tiles



Product: Viper - 935

# mix & match

CHAPTERS OF INSPIRATION

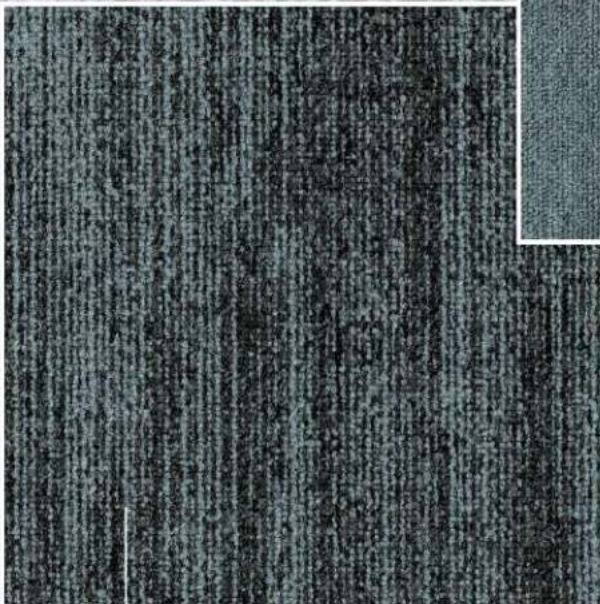
---

Our Mix & Match range of versatile carpet tiles offer a perfect blend of design freedom and affordability, allowing you to play with shades, textures, and dimensions to personalise your workspace.

Imagine a blend of Viper and Shark, combining them for a unique look and endless design possibilities.



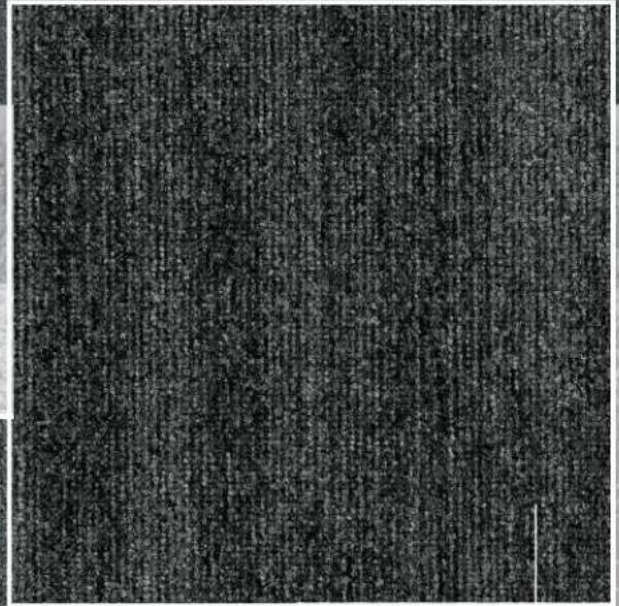
Product: Shark-559



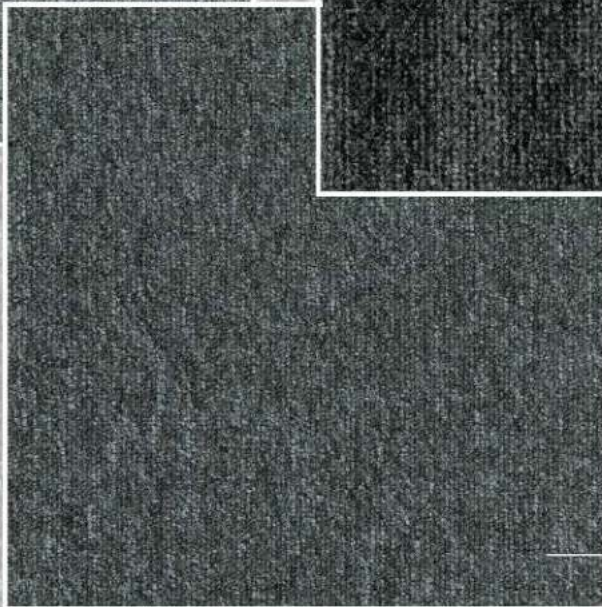
Product: Viper-559



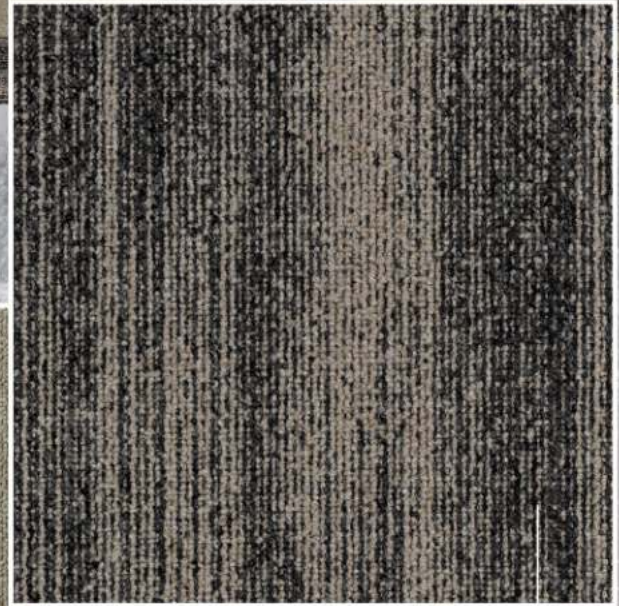
Product: Shark - 926



Product: Viper - 979



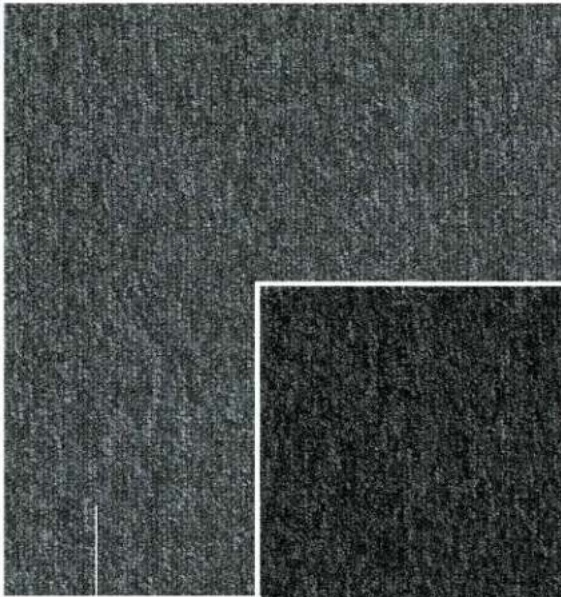
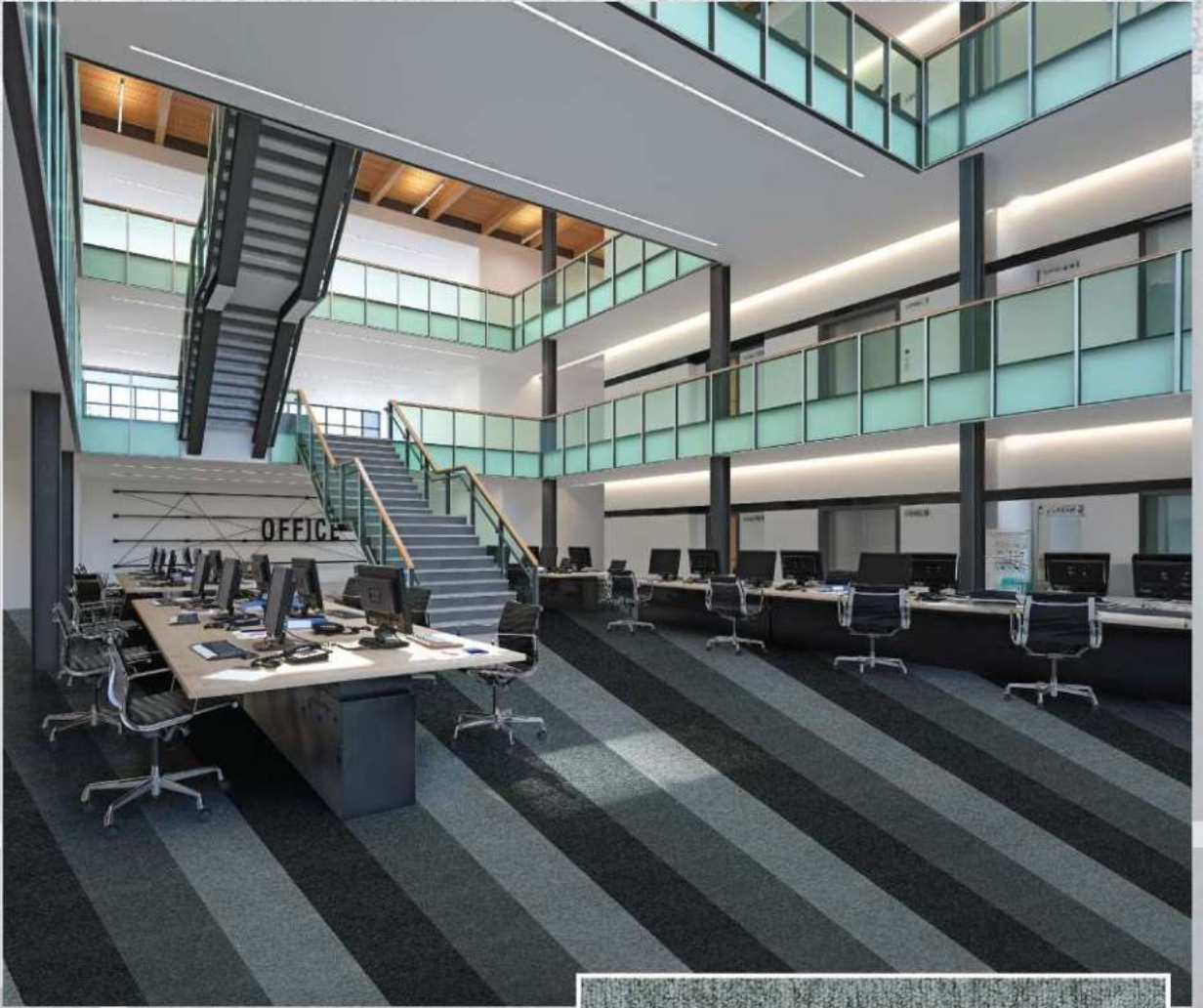
Product: Shark - 980



Product: Viper - 733



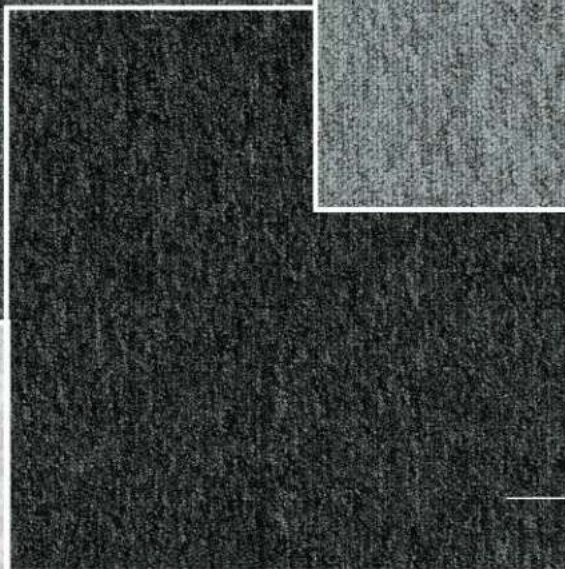
Product: Shark - 752



Product: Shark-980



Product: Shark-926



Product: Shark-980

# Viper Carpet Tiles

## Technical Specifications

Construction Structure Structuur Konstruktion	Tufted 1/12" gauge loop
Pile fibre composition Composition des fibres Poolmateriaal Material der Polnutzschicht	100% solution dyed nylon
Secondary backing Envers Rug Beschichtung	Ecoflex™ Statera
Total weight Poids total Totaal gewicht Gesamtgewicht	+/- 3900 g/m <sup>2</sup>
Pile weight Poids du velours Poolgewicht Poleinsatzgewicht	+/- 460 g/m <sup>2</sup>
Total thickness Epaisseur totale Totale dikte Gesamtdicke	+/- 6,4 mm
Surface pile thickness Hauteur du velours Poolhoogte Poldicke	+/- 2,9 mm
Surface pile density Densité du velours Pooldichtheid Polrohdichte	+/- 0,110 g/cm <sup>3</sup>
Number of tufts Nombre de boucles Aantal noppen Noppenzahl	168.300/m <sup>2</sup>
Wear classification Classement d'usage Gebrauhsklasse Beanspruchungsklasse	33/LC1 (EN 1307)
Dimensional stability Stabilité dimensionnelle Dimensionele stabiliteit Dimensionsstabilität	≤ 0,2% (EN 986)
Colour fastness to light Solidité des couleurs à la lumière Lichtbestendigheid van de kleuren Lichtechtheit	≥ 7
Colour fastness to water Solidité à l'eau Waterrechtheid Wasserechtheit	≥ 4
Thermal resistance Résistance thermique - Wärmedoor- laatweerstand - Wärmedurchlasswider- stand	0,075 m <sup>2</sup> .K/W
Permanent antistatic Antistatique permanent Permanent antistatisch Permanent antistatisch	≤ 2 kV
Size & Packaging Dimensions & Emballage Formaat en verpakking Abmessungen & Verpackung	50 x 50 cm 5 m <sup>2</sup> /box 24 boxes/pallet
Number of colours Nombre de coloris Aantal kleuren Anzahl der Farben	3

We reserve all rights for technical improvements. 05/2024 - SC065CTC066CUB6

# Shark Carpet Tiles

## Technical Specifications

Construction Structure Structuur Konstruktion	Tufted 1/10" gauge loop
Pile fibre composition Composition des fibres Poolmateriaal Material der Polnutzschicht	100% solution dyed nylon
Secondary backing Envers Rug Beschichtung	Ecoflex™ Statera
Total weight Poids total Totaal gewicht Gesamtgewicht	+/- 3700 g/m <sup>2</sup>
Pile weight Poids du velours Poolgewicht Poleinsatzgewicht	+/- 480 g/m <sup>2</sup>
Total thickness Epaisseur totale Totale dikte Gesamtdicke	+/- 5,5 mm
Surface pile thickness Hauteur du velours Poolhoogte Poldicke	+/- 2,4 mm
Surface pile density Densité du velours Pooldichtheid Polrohdichte	+/- 0,108 g/cm <sup>3</sup>
Number of tufts Nombre de boucles Aantal noppen Noppenzahl	184.500/m <sup>2</sup>
Wear classification Classement d'usage Gebrauhsklasse Beanspruchungsklasse	33/LC1 (EN 1307)
Dimensional stability Stabilité dimensionnelle Dimensionele stabiliteit Dimensionsstabilität	≤ 0,2% (EN 986)
Colour fastness to light Solidité des couleurs à la lumière Lichtbestendigheid van de kleuren Lichtechtheit	≥ 7
Colour fastness to water Solidité à l'eau Waterrechtheid Wasserechtheit	≥ 4
Sound absorption Absorption phonique Geluidsabsorptie Schallabsorptionsgrad	0,15 aw (EN ISO 354)
Impact sound reduction Réduction phonique aux bruits d'impacts Réduction contactgeluid Trittschallverbesserungsmaß	ΔLw = 27 dB (EN ISO 10140-3)
Permanent antistatic Antistatique permanent Permanent antistatisch Permanent antistatisch	≤ 2 kV
Size & Packaging Dimensions & Emballage Formaat en verpakking Abmessungen & Verpackung	50 x 50 cm 5 m <sup>2</sup> /box 24 boxes/pallet

We reserve all rights for technical improvements. 01/2023 - SC066RKC035BE



6F1C13B1