

**Product
Catalogue
2025-26**

“

Experience Mohawk Group
for groundbreaking products
that gratify harmony in
every corner while adding
grace to your space”

About **Mohawk Group**

Mohawk Group is the premium brand for commercial flooring solutions of Unilin within the EMEA market.

Step into the core of Mohawk Group, where commitment to innovation, well-being and design converge. Learn more about our structural strength and experience an approach that enhances the well-being of everyone connected through our commercial flooring solutions.



Carpet Tiles

The Collection

SHARK & VIPER

| | |
|-------|-----------|
| Shark | 06 |
| Viper | 08 |

ART INTERVENTION

| | |
|----------------|-----------|
| Creative Spark | 10 |
|----------------|-----------|

CONTOUR

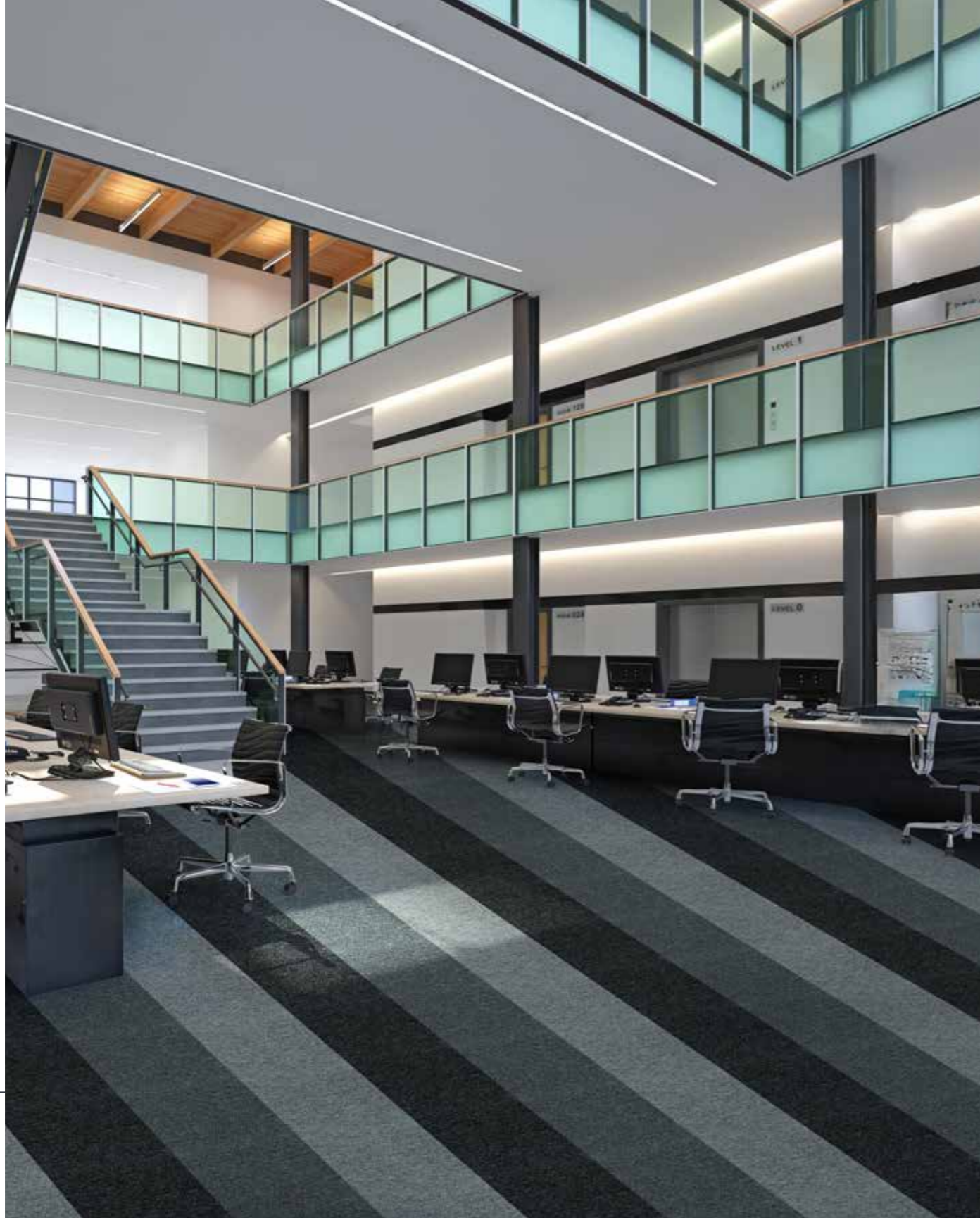
| | |
|------|-----------|
| View | 14 |
|------|-----------|

RUDIMENTS

| | |
|---------------|-----------|
| Jute | 16 |
| Clay | 18 |
| Clay Create | 20 |
| Metallic Clay | 22 |

MIX & MATCH

| | |
|-------------|-----------|
| Mix & Match | 24 |
|-------------|-----------|



Shark - 990 □
980 - 926

Shark



559



752



926



980

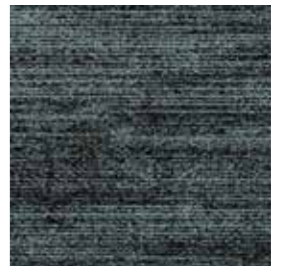


990



Viper - 559

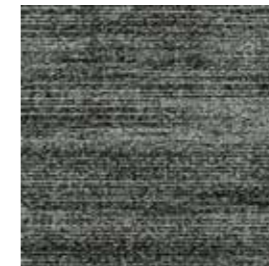
Viper



559



733



927



935



979



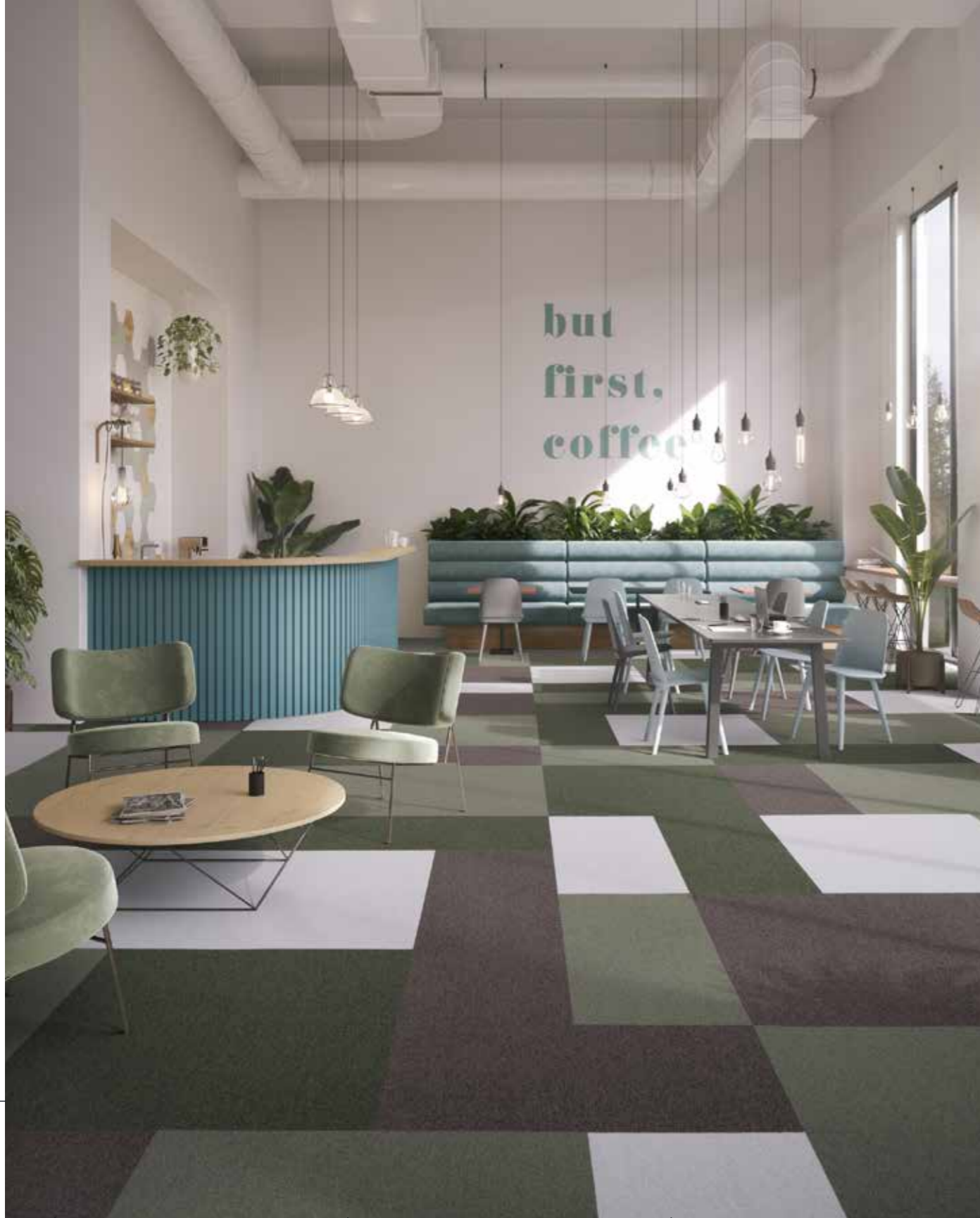
Multi Colour Mix

Creative Spark Art Intervention

- Construction: tufted 1/10" gauge loop
- Backing: EcoFlex™ Statera
- Pile material: 100% solution dyed nylon
- Dimensions - m²/box: 50 x 50 cm - 5 m²
- Pile weight: ± 540 g/m²
- Pile thickness: ± 3,1 mm
- Total thickness: ± 6,3 mm
- Wear classification: 33 / LC1
- Fire classification: Bfl-s1
- Impact sound reduction: ΔL_w = 32 dB
- Sound absorption: 0,15 aw
- GUT-Prodís number: 3AA1D4DF



LRV = Light Reflectance Value according to BS 8493



646 □

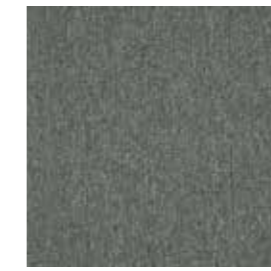
□ 848

□ 685

□ 911



989 LRV: 4,37



969 LRV: 12,73



419 LRV: 19,09



731 LRV: 25,98



979 LRV: 9,02



927 LRV: 19,80



854 LRV: 8,29



733 LRV: 18,39



904 LRV: 14,44



559 LRV: 13,16



848 LRV: 3,95



751 LRV: 20,99



911 LRV: 31,04



545 LRV: 23,51

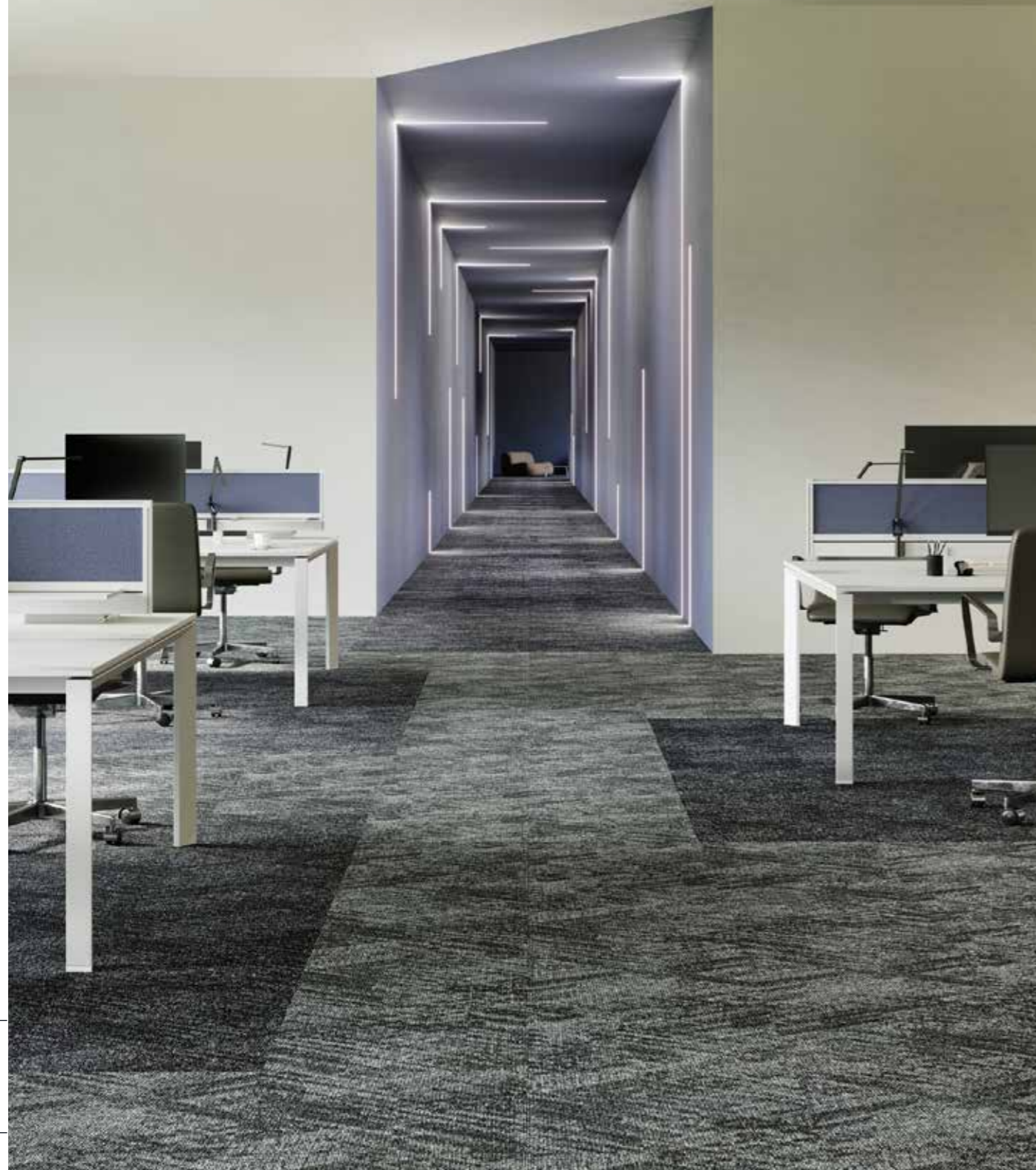


998 LRV: 2,29



745 LRV: 9,95

LRV = Light Reflectance Value according to BS 8493



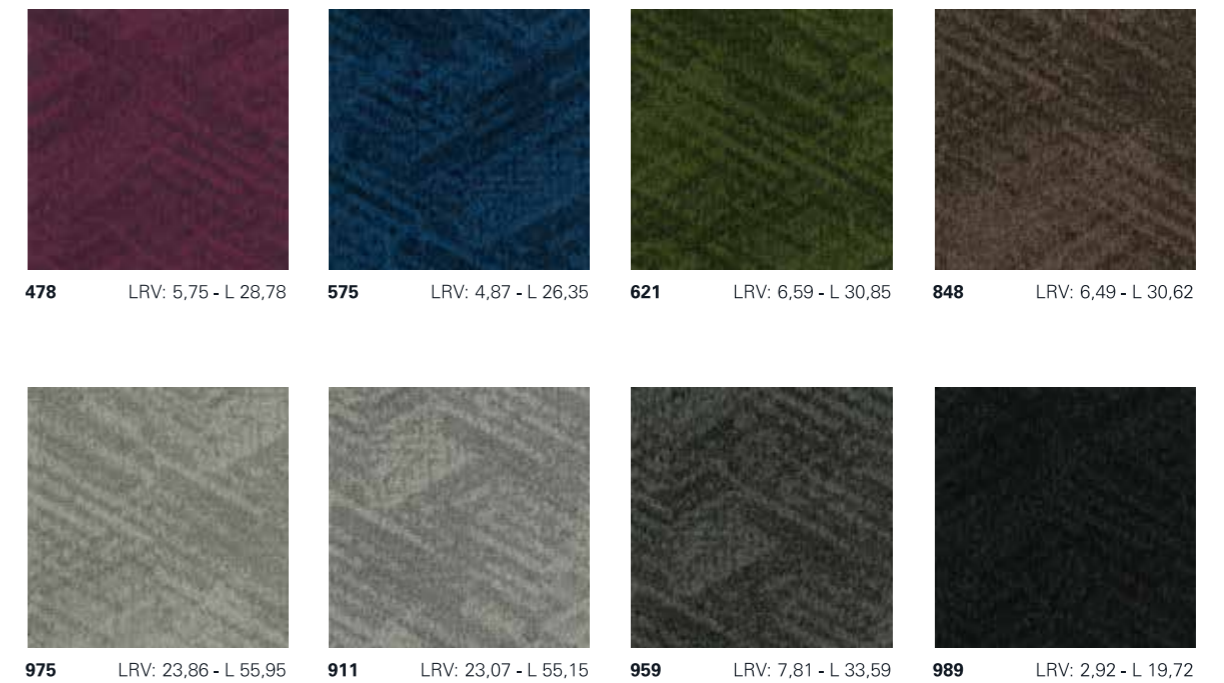
989 □

959 □

View

Contour

- Construction: tufted 1/12" gauge loop
- Backing: EcoFlex™ Statera
- Pile material: 100% solution dyed nylon
- Dimensions - m²/box: 50 x 50 cm - 5 m²
- Pile weight: ± 600 g/m²
- Pile thickness: ± 3,1 mm
- Total thickness: ± 6,4 mm
- Wear classification: 33 / LC1
- Fire classification: Bfl-s1
- Impact sound reduction: ΔLw = 25 dB
- Sound absorption: 0,15 aw
- GUT-Prodís number: CAC6CFE5



LRV = Light Reflectance Value according to BS 8493, L = according to CIE L*a*b* colour space



959

989

159

Jute Rudiments

- Construction: tufted 1/12" gauge loop
- Backing: EcoFlex™ Statera
- Pile material: 100% solution dyed nylon
- Dimensions - m²/box: 50 x 50 cm - 5 m²
- Pile weight: ± 600 g/m²
- Pile thickness: ± 3,2 mm
- Total thickness: ± 6,4 mm
- Wear classification: 33 / LC2
- Fire classification: Bfl-s1
- Impact sound reduction: ΔL_w = 28 dB
- Sound absorption: 0,15 aw
- GUT-Prodís number: 94EFCC68

| | | | |
|---|---|---|---|
|  |  |  |  |
| 363 LRV: 4,25 | 273 LRV: 9,24 | 159 LRV: 27,58 | 685 LRV: 5,45 |
|  |  |  |  |
| 989 LRV: 3,36 | 848 LRV: 5,84 | 789 LRV: 16,58 | 975 LRV: 21,79 |
|  |  |  |  |
| 959 LRV: 6,99 | 569 LRV: 7,31 | 545 LRV: 16,41 | 911 LRV: 18,20 |

LRV = Light Reflectance Value according to BS 8493, L = according to CIE L*a*b* colour space



911 - 975 □

Clay Rudiments

- Construction: tufted 1/12" gauge loop
- Backing: EcoFlex™ Statera
- Pile material: 100% solution dyed nylon
- Dimensions - m²/box: 25 x 100 cm - 5 m²
- Pile weight: ± 600 g/m²
- Pile thickness: ± 3,4 mm
- Total thickness: ± 7,1 mm
- Wear classification: 33 / LC1
- Fire classification: Bfl-s1
- Impact sound reduction: ΔLw = 28 dB
- Sound absorption: 0,15 aw
- GUT-Prodís number: E4C2F79C



975 LRV: 23,93 - L 54,94



685 LRV: 5,19 - L 26,48



789 LRV: 15,48 - L 49,29



569 LRV: 8,75 - L 39,11



848 LRV: 6,41 - L 28,26



545 LRV: 16,32 - L 49,28



988 LRV: 2,70 - L 20,68



911 LRV: 22,14 - L 49,80



363 LRV: 3,76 - L 21,08



959 LRV: 8,92 - L 29,14



273 LRV: 8,08 - L 34,74



989 LRV: 3,40 - L 23,02

LRV = Light Reflectance Value according to BS 8493, L = according to CIE L*a*b* colour space



955 - 977 - 979 □

Clay Create Rudiments

- Construction: tufted 1/12" gauge loop
- Backing: EcoFlex™ Statera
- Pile material: 100% solution dyed nylon
- Dimensions - m²/box: 25 x 100 cm - 5 m²
- Pile weight: ± 600 g/m²
- Pile thickness: ± 3,4 mm
- Total thickness: ± 7,1 mm
- Wear classification: 33 / LC1
- Fire classification: Bfl-s1
- Impact sound reduction: ΔLw = 28 dB
- Sound absorption: 0,15 aw
- GUT-Prodix number: 5E8698AB



977 LRV: 23,40 - L 54,85



699 LRV: 3,14 - L 22,84



872 LRV: 12,76 - L 39,73



599 LRV: 3,03 - L 27,35



887 LRV: 2,97 - L 20,00



556 LRV: 11,63 - L 39,77



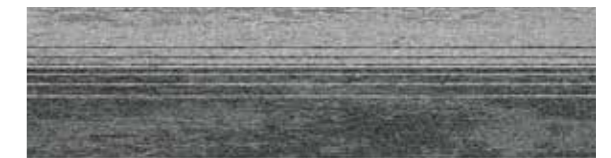
987 LRV: 5,01 - L 21,47



594 LRV: 16,70 - L 52,41



339 LRV: 3,48 - L 23,56



955 LRV: 10,18 - L 36,61



325 LRV: 7,46 - L 35,11



979 LRV: 4,79 - L 29,01

LRV = Light Reflectance Value according to BS 8493, L = according to CIE L*a*b* colour space



Clay 569 □

Metallic Clay □
559 - 919

Metallic Clay Rudiments

- Construction: tufted 1/12" gauge loop
- Backing: EcoFlex™ Statera
- Pile material: 100% solution dyed nylon
- Dimensions - m²/box: 25 x 100 cm - 5 m²
- Pile weight: ± 600 g/m²
- Pile thickness: ± 3,4 mm
- Total thickness: ± 7,1 mm
- Wear classification: 33 / LC1
- Fire classification: Bfl-s1
- Impact sound reduction: ΔLw = 26 dB
- Sound absorption: 0,20 aw
- GUT-Prodís number: 9ADE6ED5



LRV = Light Reflectance Value according to BS 8493, L = according to CIE L*a*b* colour space



mix & match

CHAPTERS OF INSPIRATION

CARPET TILES:

Contour: View

Rudiments: Jute - Clay - Clay Create - Metallic Clay

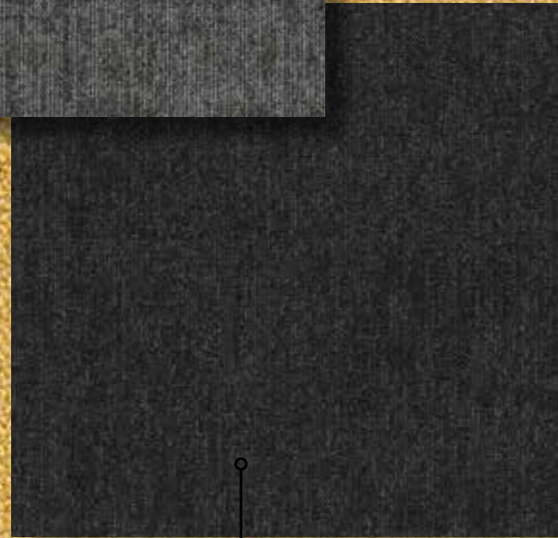
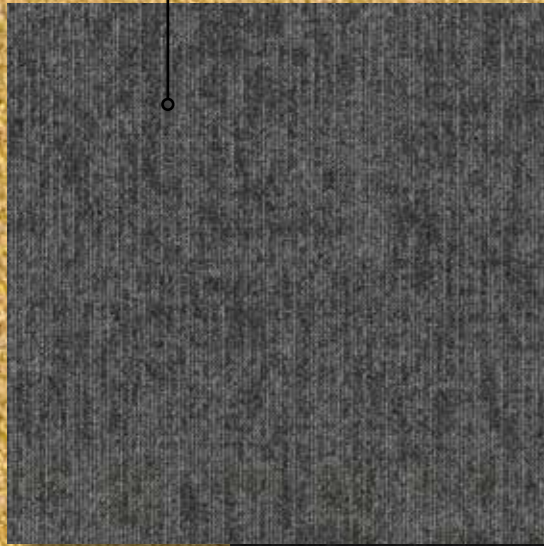
Art Intervention: Creative Spark

Shark & Viper: Shark - Viper

Rudiments

Jute 159

Jute 959



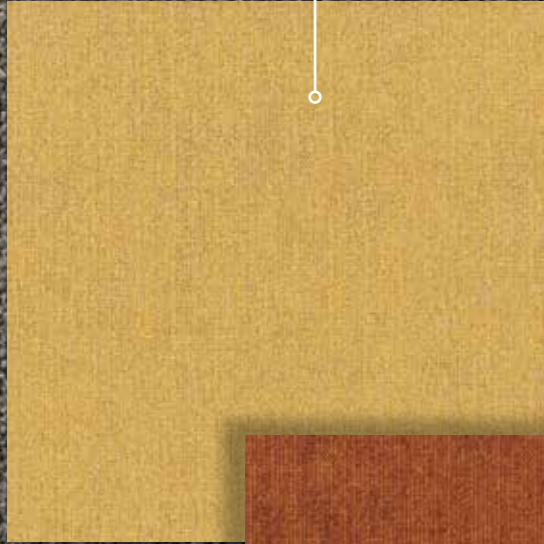
Jute 989



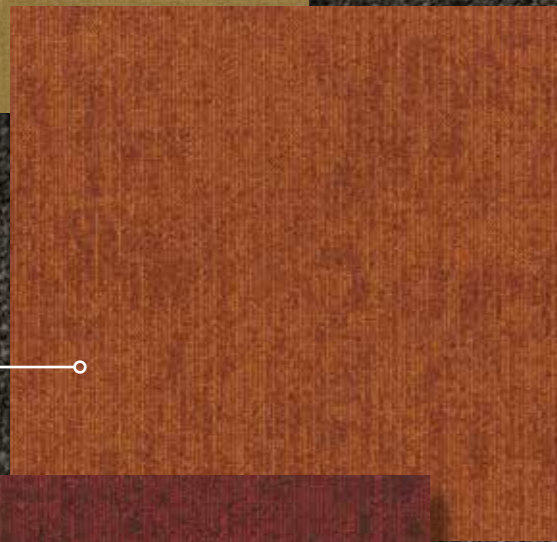
Rudiments

Jute 848

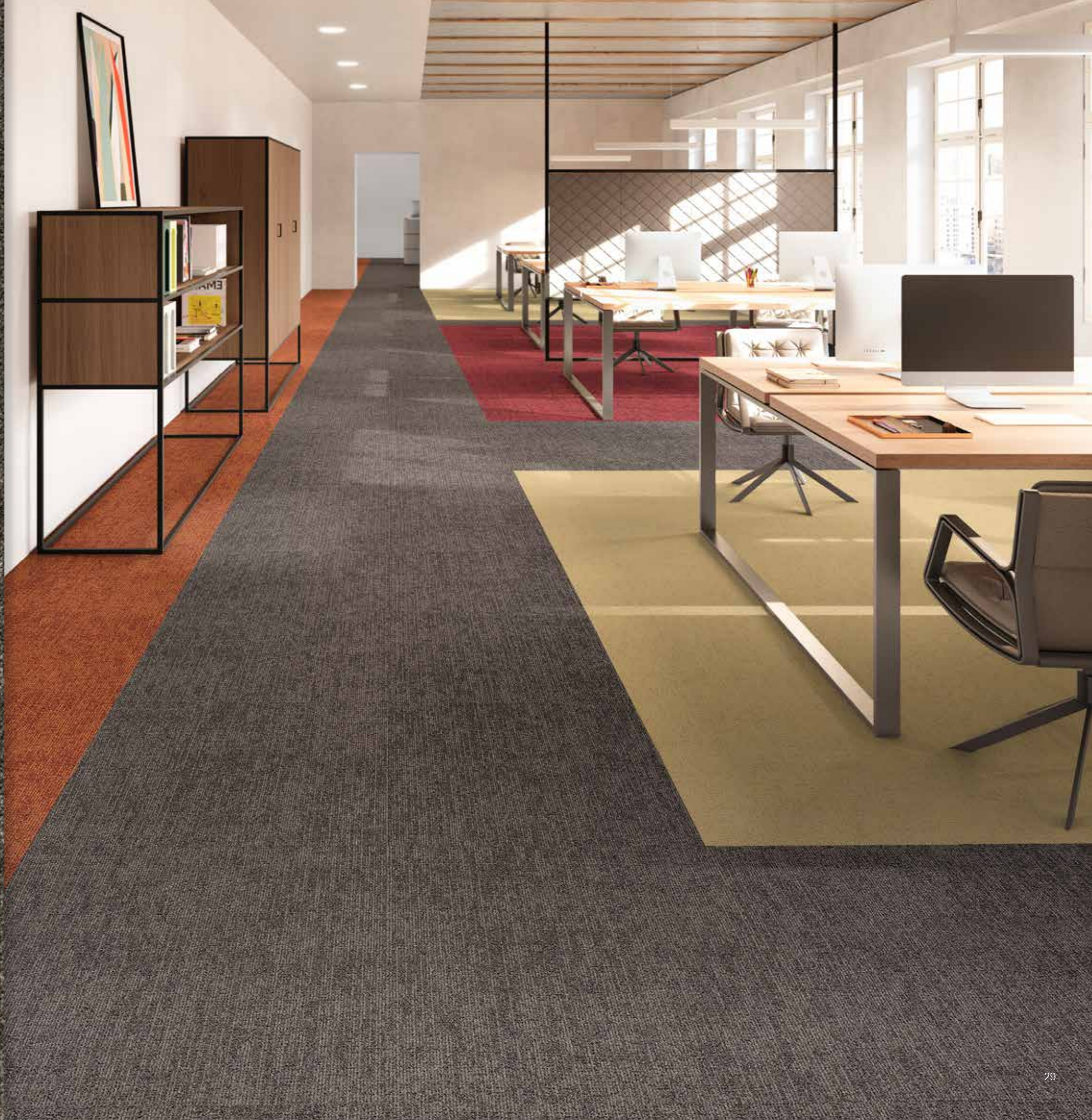
Jute 159



Jute 273



Jute363



Art Intervention

Creative Spark 232

Jute 273

Basalt 273

Teak 273

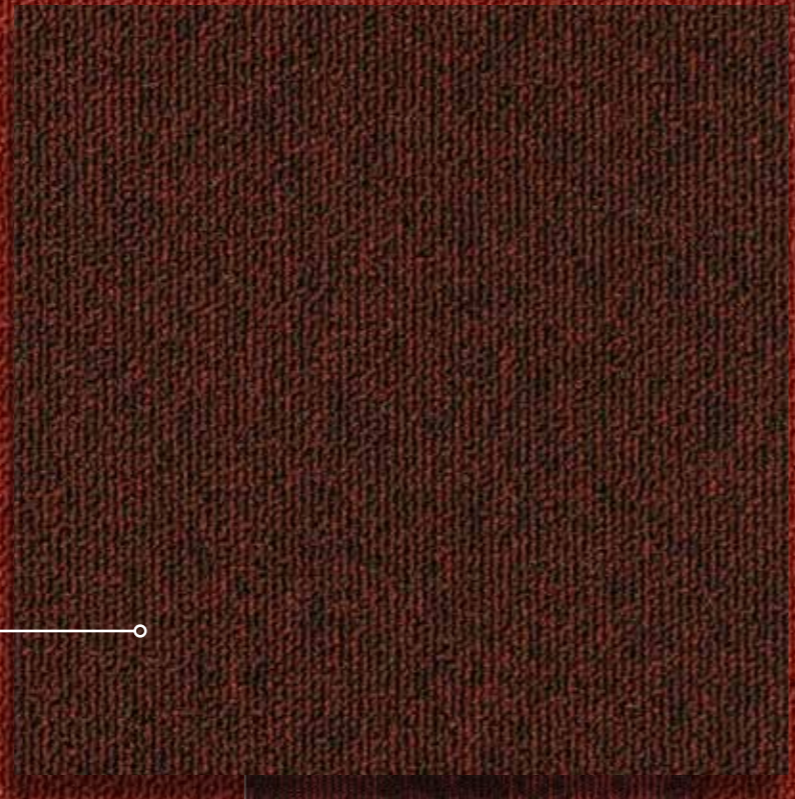
Clay 273

Clay Create 325

Creative
Spark 362

Art Intervention

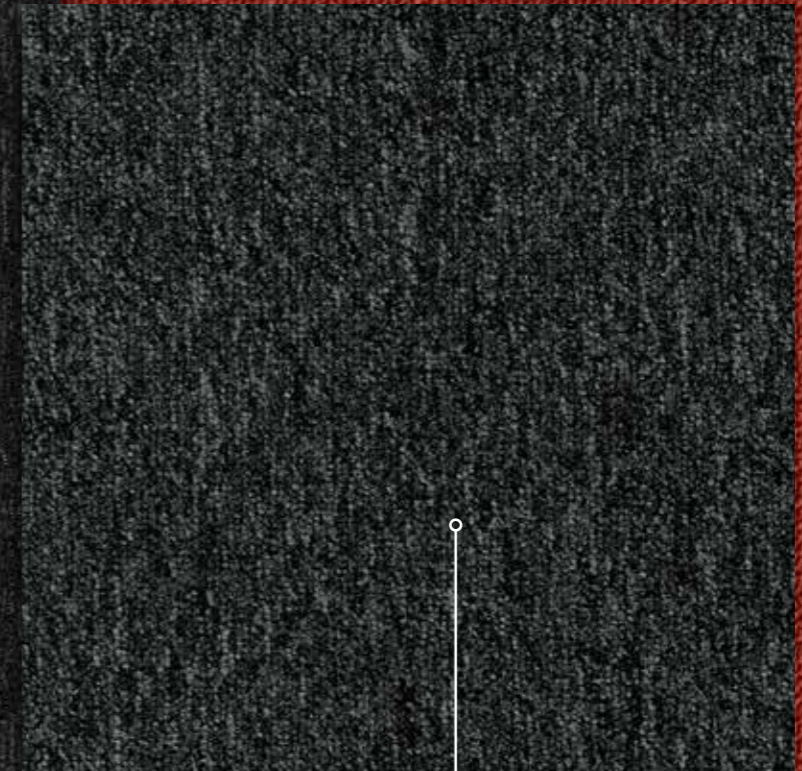
Creative Spark 310



Creative Spark 363



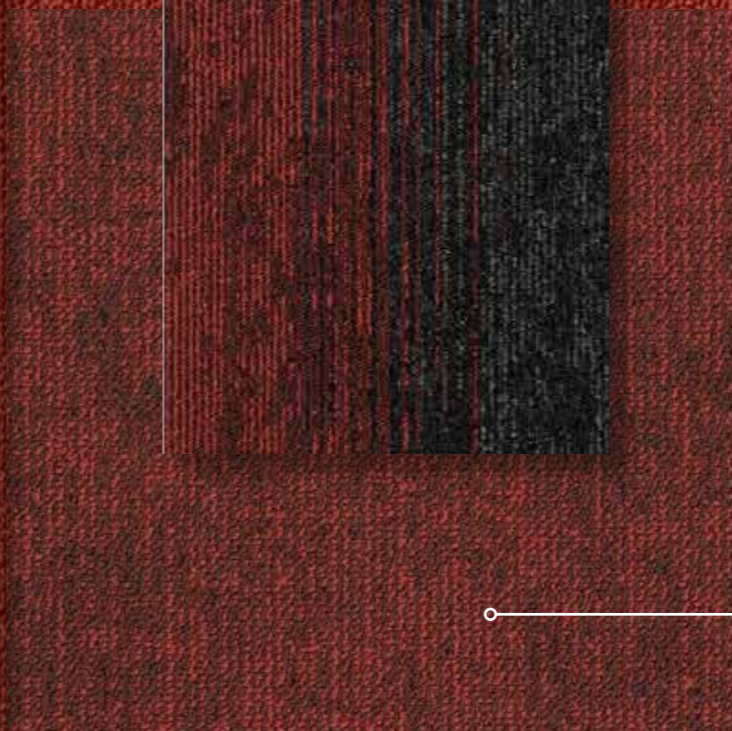
Clay Create 339



Shark 990



Clay 363



Jute 363



Rudiments

Clay 273

Clay 363

Clay Create 325



Art Intervention

Creative Spark 362

Clay Create 325

Clay 273

Jute 273

Basalt 273

Jute 273

Art Intervention

Creative Spark 362

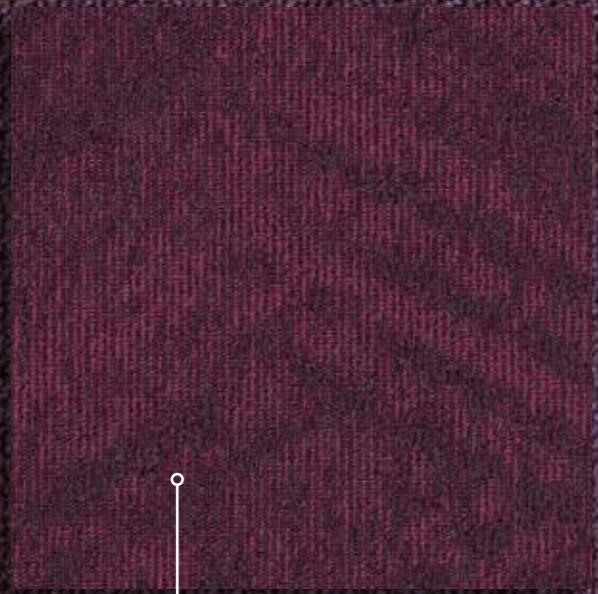
Creative Spark 363

Shark 990

Creative Spark 232

Creative Spark 998

Art Intervention
Creative Spark 478



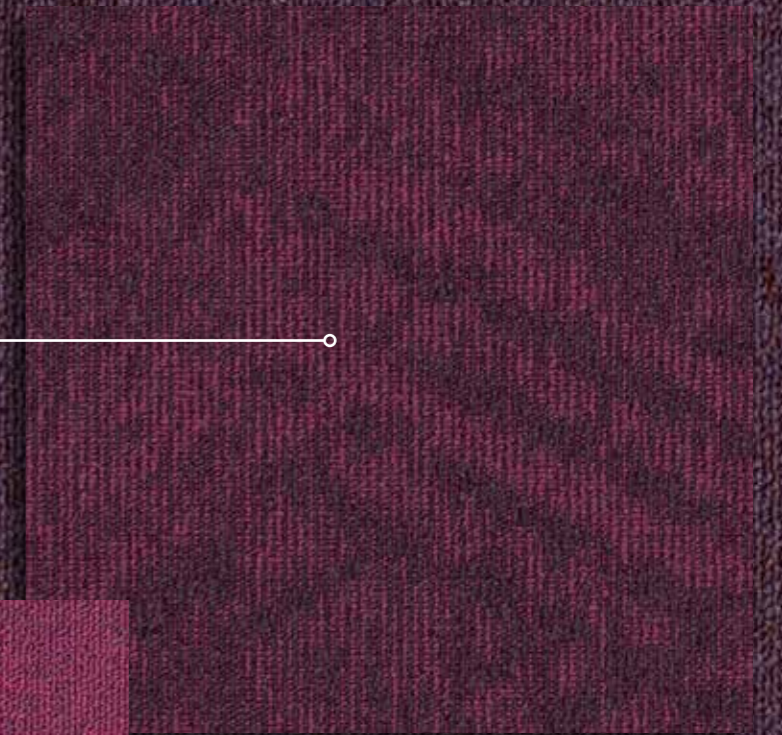
View 478



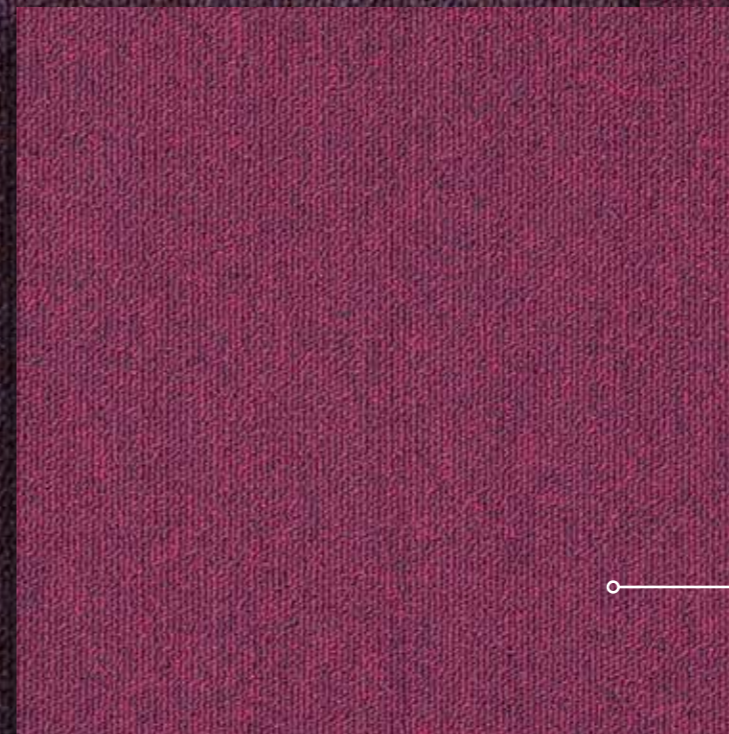
Art Intervention

Creative Spark 478

View 478



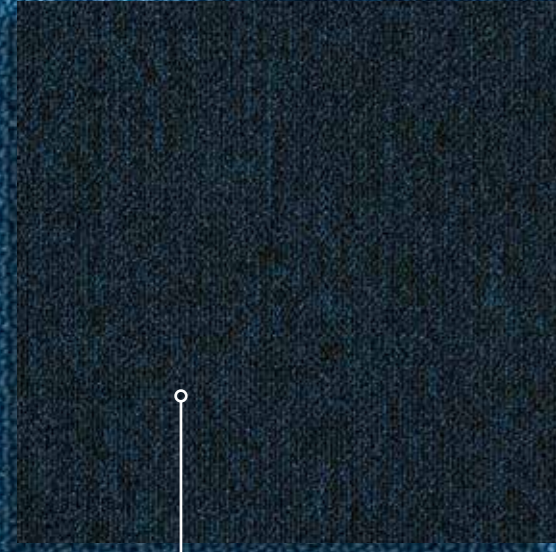
Creative Spark 467



Art Intervention

Creative Spark 543

View 575



Creative Spark 566



Art Intervention

Creative Spark 543

View 575

Creative Spark 566

Rudiments

Clay 545



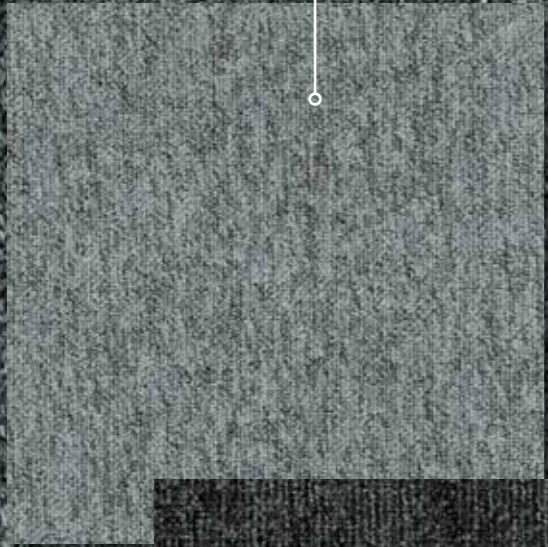
Clay Create 556



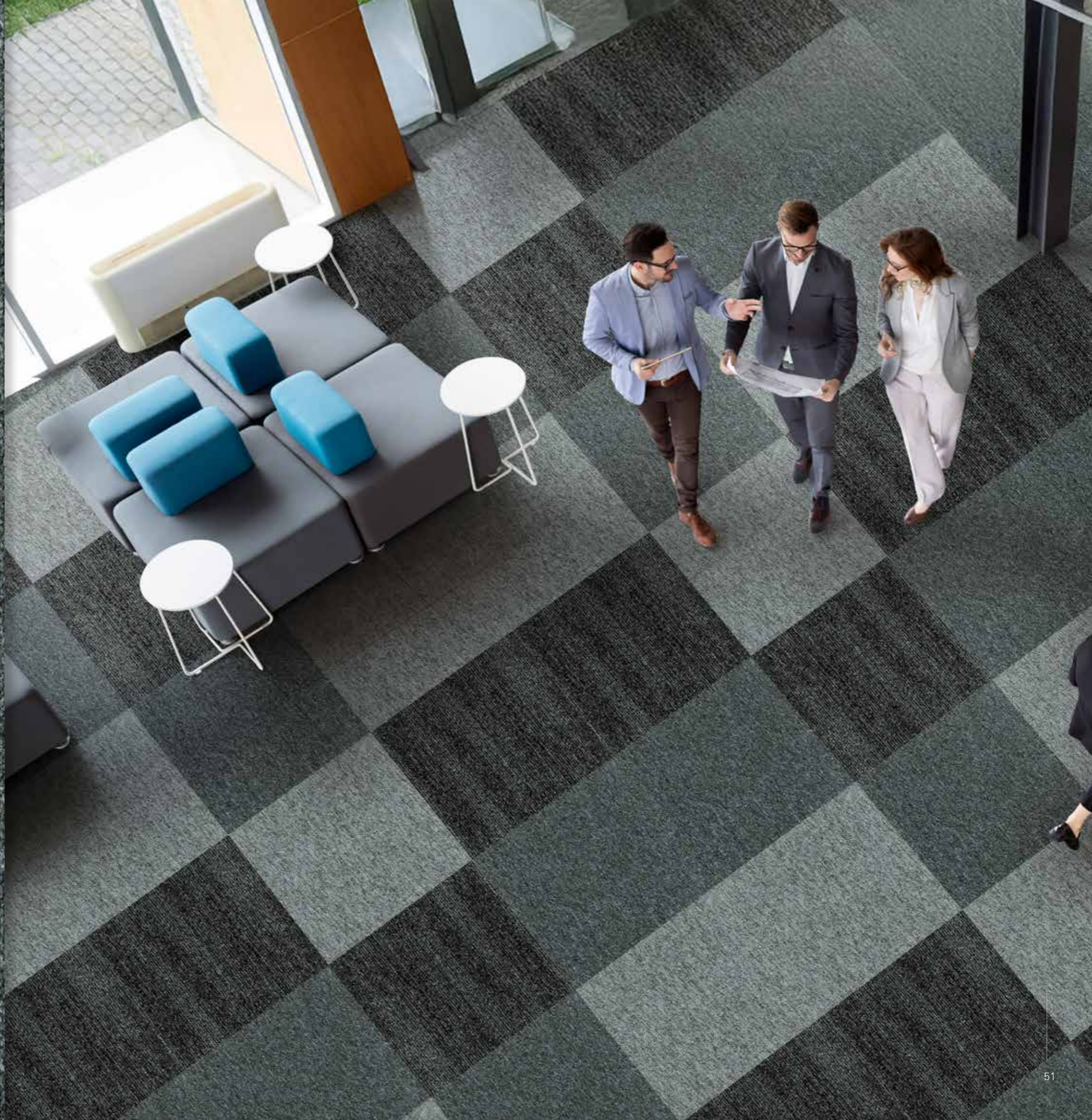
Rudiments

Shark 980

Shark 926



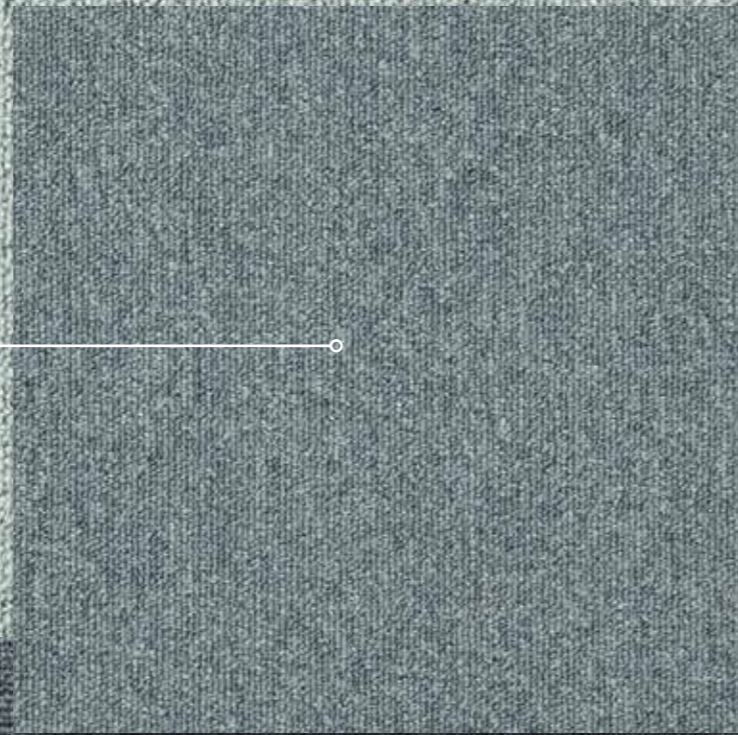
Viper 979



Art Intervention

Creative Spark 545

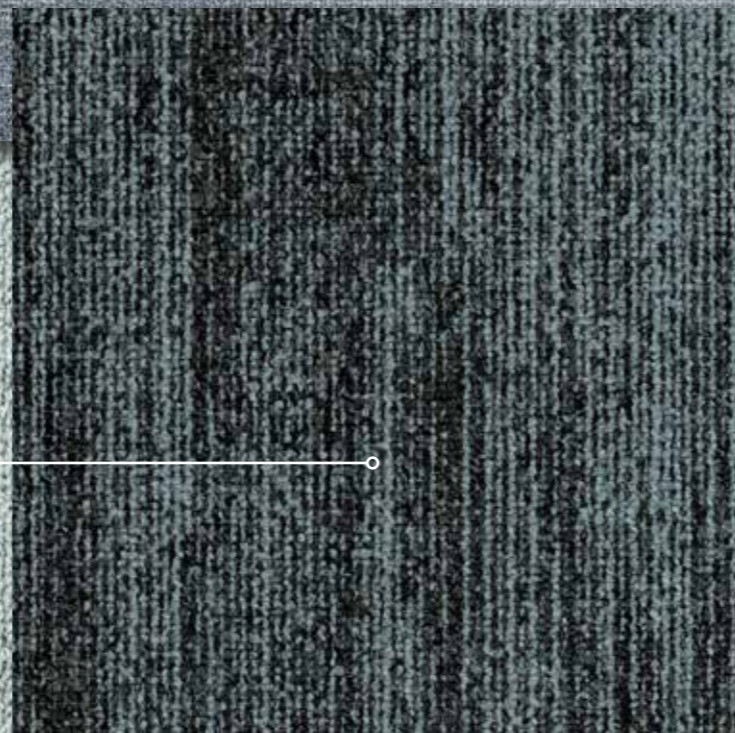
Clay Spark 559



Clay Create 556



Viper 559



Shark 559



Metallic Clay 559



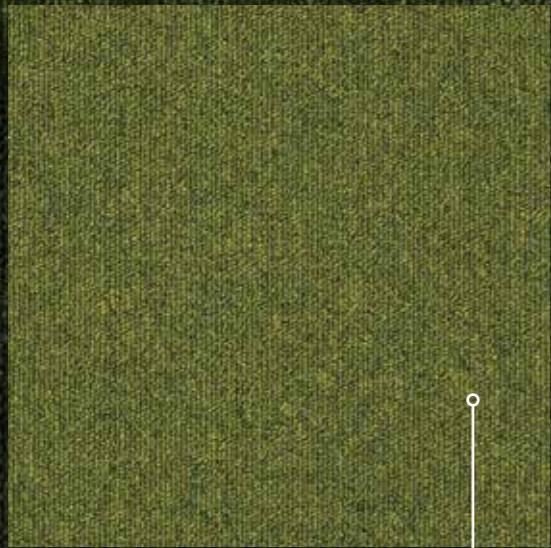
Clay 545



Art Intervention

Creative Spark 646

View 621



Creative Spark 621



Art Intervention

Creative Spark 621

View 621



Creative Spark 646

Rudiments

Clay 685

Clay 989

Clay Create 699



Art Intervention

Creative Spark 685

ClayCreate 699

Jute 685

Creative Spark 646

Shark 990

Clay 685

Metallic Clay 648

Rudiments

Clay 789



Metallic Clay 778



Art Intervention

Creative Spark 731

Clay 789

Creative Spark 745

Metallic Clay 778

Shark 752

Jute 789

Clay Create 872

Art Intervention

Creative Spark 745

Clay Create 872

Clay 848

Jute 848

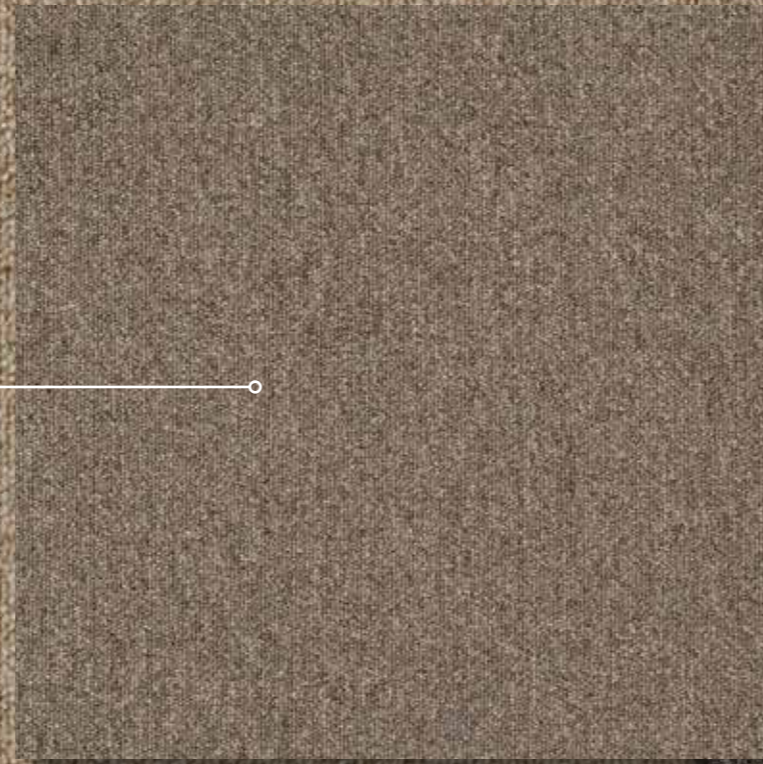
Creative
Spark 848

Shark 990

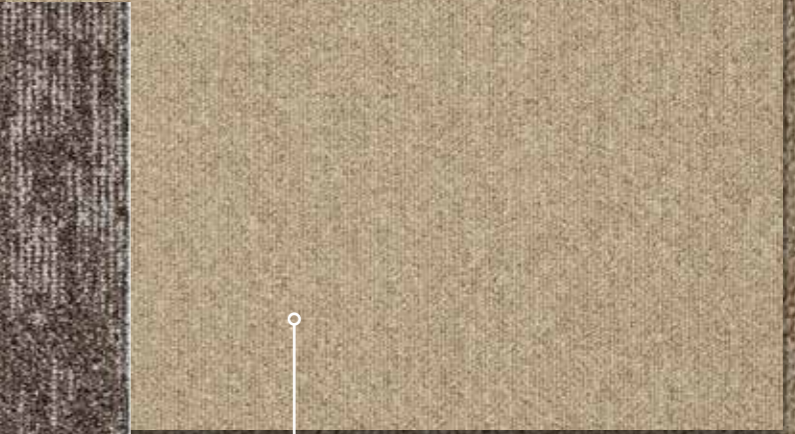
Art Intervention

Creative Spark 751

Creative Spark 745



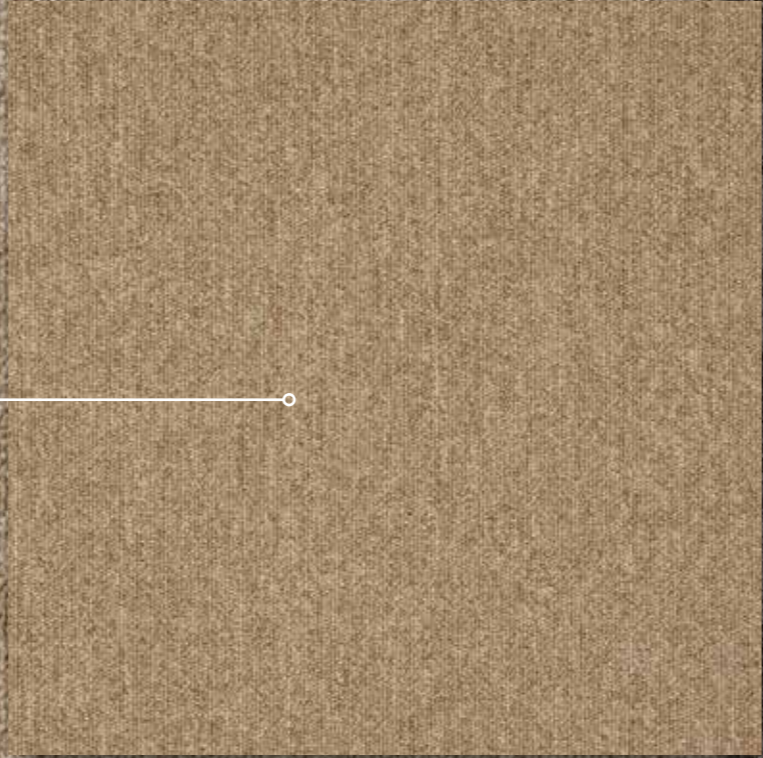
Creative Spark 731



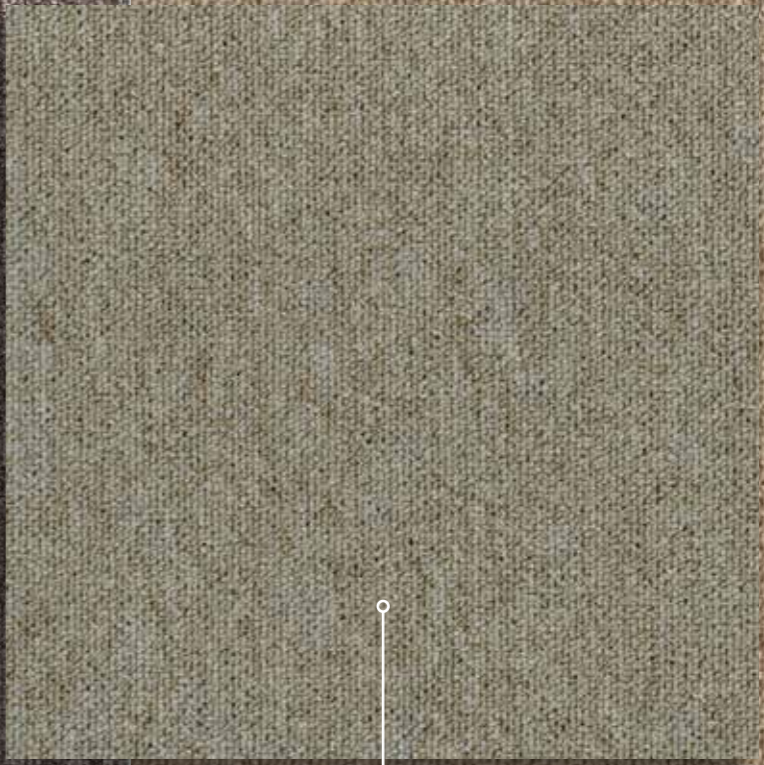
Metallic Clay 778



Creative Spark 733



Shark 752



Rudiments

Clay 789

Clay
Create
872

Clay
848

Clay
Create
887

Clay
988

Clay
Create
987



Art Intervention

Creative Spark 848

View 848

Viper 733

Metallic Clay 845

Creative Spark 745

Clay 848

Shark 752

Jute 848

Clay Create 872

Rudiments
Clay 911



Clay 975



Art Intervention

Creative Spark 911

Metallic
Clay 964

Shark 926

Clay 975

Jute 975

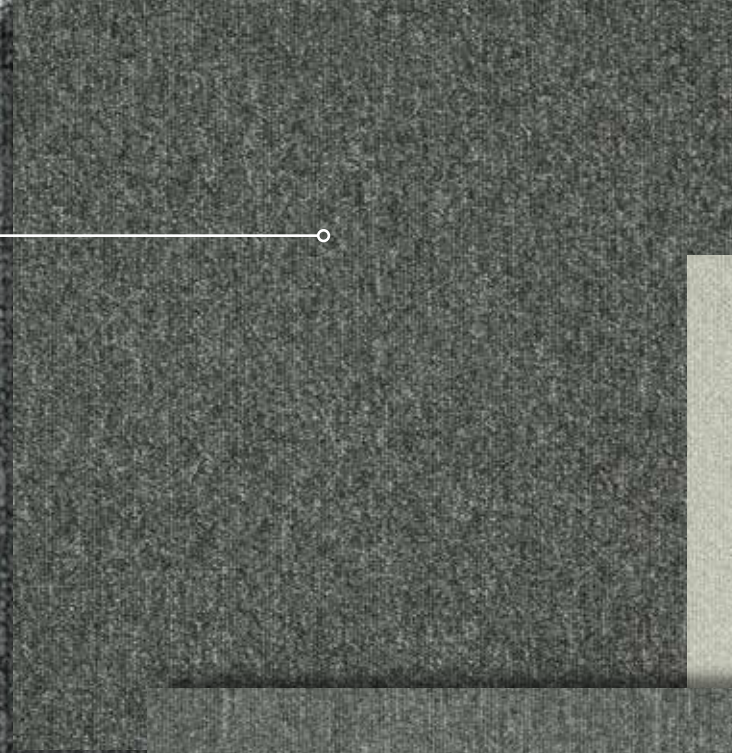
Viper 935

Clay Create 977

Art Intervention

Creative Spark 927

Creative
Spark 979



Creative
Spark 911



Creative Spark 969



Art Intervention

Creative Spark 969

Clay 911

Metallic
Clay 919

Creative Spark 911

Jute 91

Viper 935

Shark 926

View 911

Rudiments

Clay 959



Art Intervention

Creative Spark 969

Clay Create 979

Shark 980

Jute 959

Metallic
Clay 947

View 959

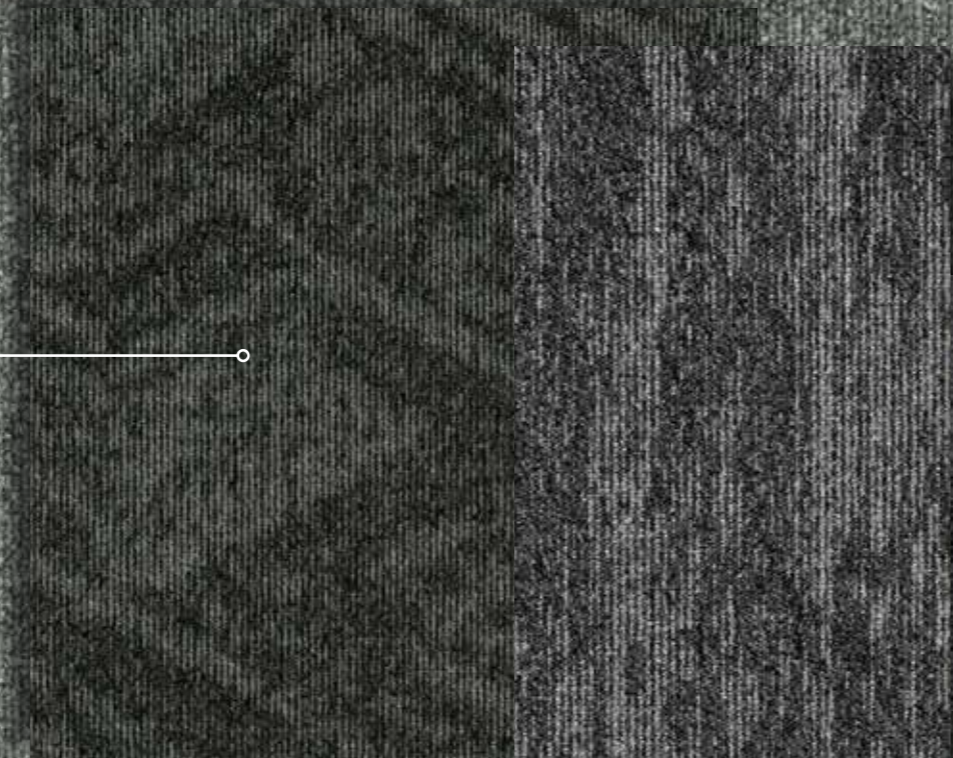
Clay 959

Creative
Spark 989

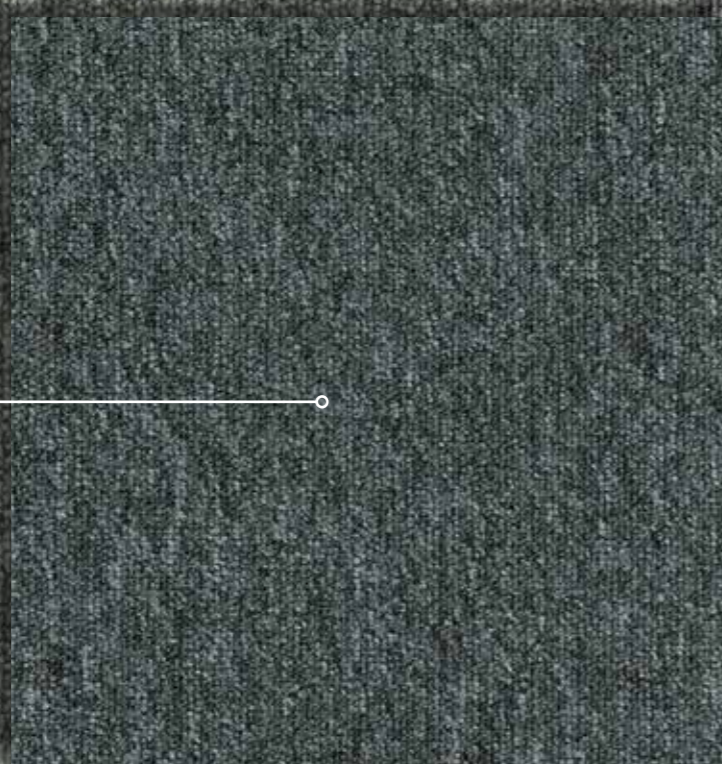
Art Intervention

Creative Spark 969

View 959



Shark 980



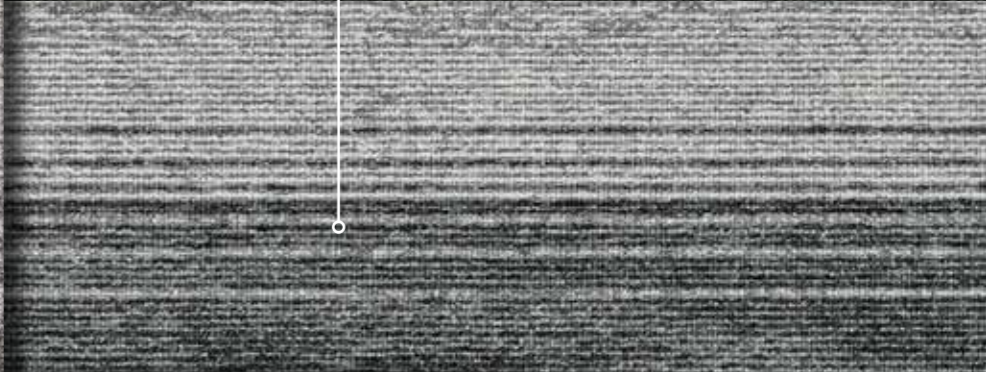
Clay 959



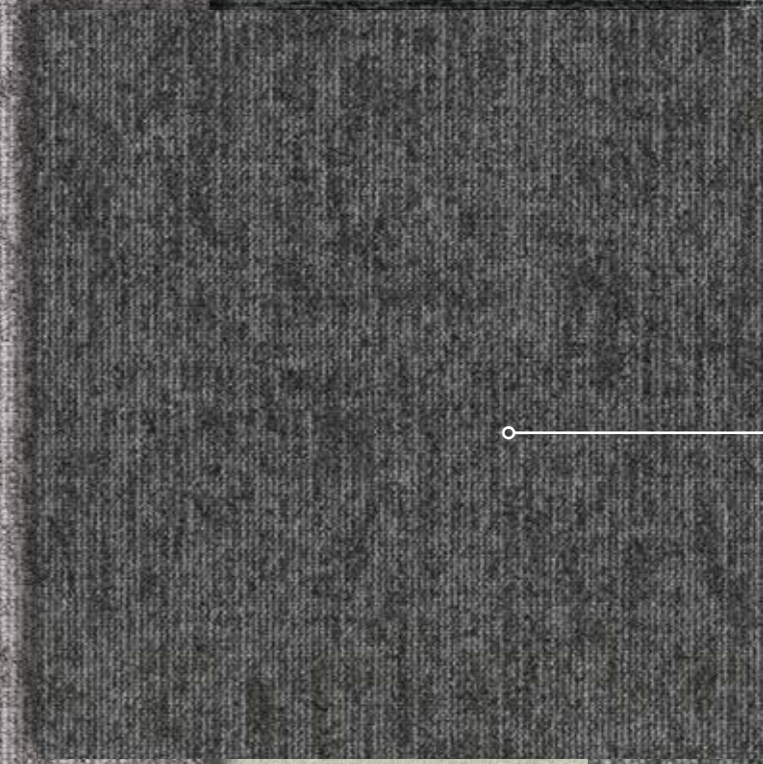
Clay Create 955



Metallic Clay 964



Jute 959



Creative Spark 911



Rudiments

Clay 959

Metallic
Clay 947

Metallic
Clay 985



Art Intervention

Creative Spark 989

Metallic Clay 947

Metallic Clay 985

Creative Spark 998

Jute 959

Clay Create 955

Clay 959

View 959

Rudiments

Clay 989

Clay
Create 339

Clay 363



Art Intervention

Creative Spark 989

Clay Create 989

Metallic Clay 947

Creative
Spark 998

Jute 959

Clay Create 339

Clay 959

View 959

Art Intervention

Creative Spark 989

Clay Create 979

Metallic Clay 648

Creative
Spark 998

Jute 989

Clay Create 699

Clay 989

View 989

Art Intervention

Creative Spark 989

Clay Create 979

Metallic Clay 648

Creative
Spark 998

Creative
Spark 969

Clay Create 699

Clay 685

Jute 685

Rudiments

Clay 989

Metallic
Clay
648

Metallic
Clay
985

Clay
Create
699



Art Intervention

Creative Spark 998

Clay
Create 699

Metallic
Clay 648

Clay 989

Jute 989

Clay
Create 979

Shark 990

Viper 979

Creative
Spark 989

Rudiments

Clay 988

Clay
848

Metallic
Clay
845

Clay
Create
887



Art Intervention

Creative Spark 998

Clay 988

Metallic
Clay 984

Clay
Create 887

Creative
Spark 838

Clay Create 599

Viper 733

View 989

Creative
Spark 989

Art Intervention

Creative Spark 998

Clay
Create 979

Clay 989

View 989

Creative
Spark 989

Clay 959

Jute 989

Viper 979

Metallic Clay 985

Art Intervention

Creative Spark 998

Clay Create 887

Clay 848

Creative
Spark 848

View 989

Clay 988

Jute 989

Metallic Clay 985

Shark 990

How we strive to make an impact on well-being

We are committed to enhancing well-being for everyone connected to our products, from designers and installers to end-users, next to our own personnel. Our focus on wellbeing ensures that our carpet tiles not only adorn spaces but contribute to a healthier and more harmonious environment.

Through our products



Underfoot Comfort

Recognizing the significant impact of underfoot comfort on overall employee well-being, we have pioneered a method to objectively assess and differentiate products based on their comfort levels. Herewith reducing muscle fatigue and promoting a healthier, more comfortable workplace.



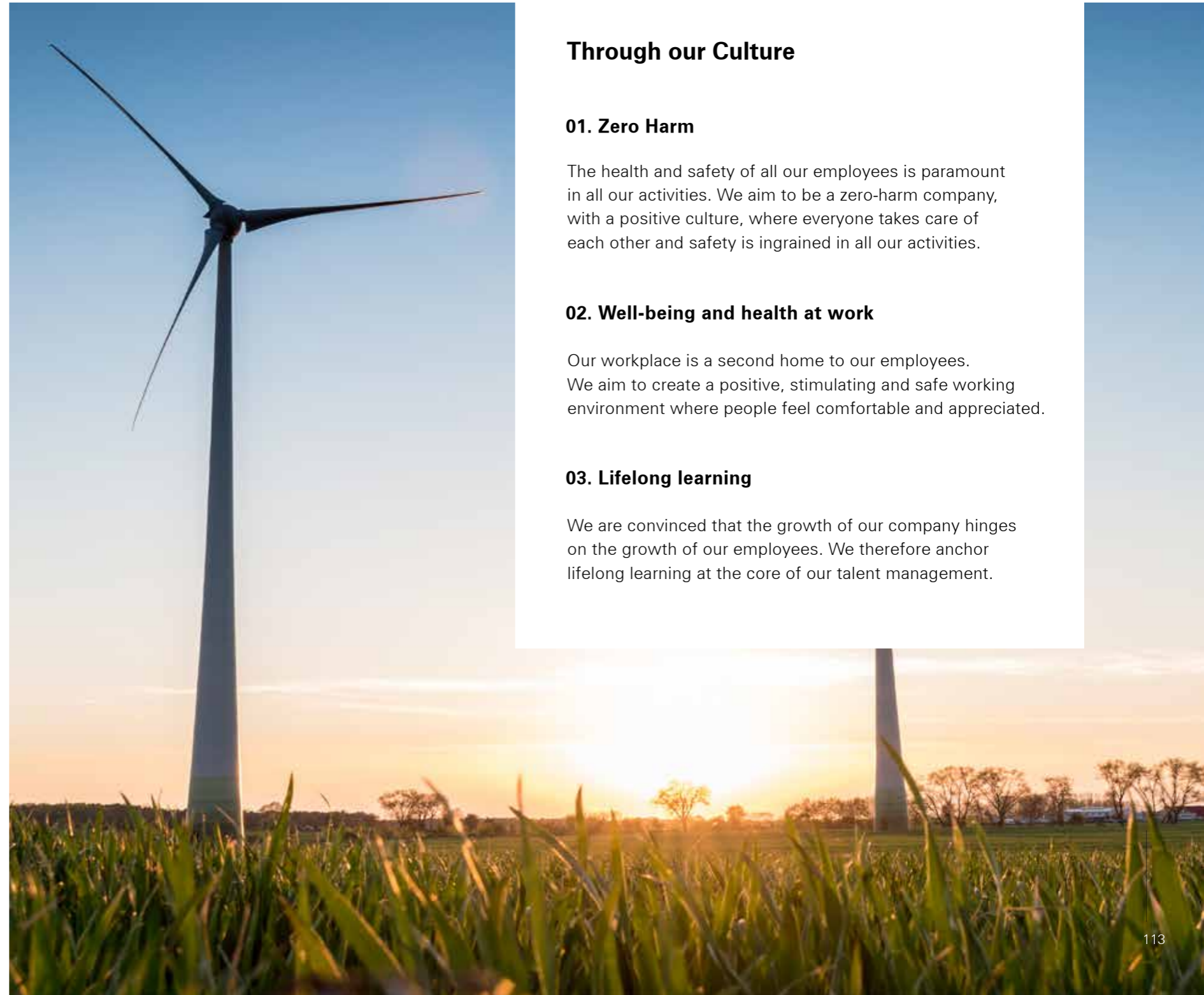
Acoustics

Acoustics are essential for a well-balanced space. Our EcoFlex™ Echo carpet tile backing showcases our dedication to wellbeing through superior impact sound insulation and improved sound absorption.



Indoor Air Quality

Recognizing the importance of indoor air quality in interior environments, our carpet tiles adhere to some of the strictest indoor emission labels, thereby mitigating health risks for end-users.



Through our Culture

01. Zero Harm

The health and safety of all our employees is paramount in all our activities. We aim to be a zero-harm company, with a positive culture, where everyone takes care of each other and safety is ingrained in all our activities.

02. Well-being and health at work

Our workplace is a second home to our employees. We aim to create a positive, stimulating and safe working environment where people feel comfortable and appreciated.

03. Lifelong learning

We are convinced that the growth of our company hinges on the growth of our employees. We therefore anchor lifelong learning at the core of our talent management.

Viper Carpet Tiles

Technical Specifications

| | |
|---|--|
| Construction Structure Structuur Konstruktion | Tufted 1/12" gauge loop |
| Pile fibre composition Composition des fibres Poolmateriaal Material der Polnutzschicht | 100% solution dyed nylon |
| Secondary backing Envers Rug Beschichtung | Ecoflex™ Statera |
| Total weight Poids total Totaal gewicht Gesamtgewicht | +/- 3900 g/m ² |
| Pile weight Poids du velours Poolgewicht Poleinsatzgewicht | +/- 460 g/m ² |
| Total thickness Epaisseur totale Totale dikte Gesamtdicke | +/- 6,4 mm |
| Surface pile thickness Hauteur du velours Poolhoogte Poldicke | +/- 2,9 mm |
| Surface pile density Densité du velours Pooldichtheid Polrohndichte | +/- 0,110 g/cm ³ |
| Number of tufts Nombre de boucles Aantal noppen Noppenzahl | 168.300/m ² |
| Wear classification Classement d'usage Gebruiksklasse Beanspruchungsklasse | 33/LC1 (EN 1307) |
| Dimensional stability Stabilité dimensionnelle Dimensionele stabiliteit Dimensionsstabilität | ≤ 0,2% (EN 986) |
| Colour fastness to light Solidité des couleurs à la lumière Lichtbestendigheid van de kleuren Lichtechtheit | ≥ 7 |
| Colour fastness to water Solidité à l'eau Waterechtheid Wasserechtheit | ≥ 4 |
| Thermal resistance Résistance thermique - Warmtedoor- laatweerstand - Wärmedurchlasswi- derstand | 0,075 m ² .KW |
| Permanent antistatic Antistatique permanent Permanent antistatisch Permanent antistatisch | ≤ 2 kV |
| Size & Packaging Dimensions & Emballage Formaat en verpakking Abmessungen & Verpackung | 50 x 50 cm 5 m ² /box 24 boxes/pallet |
| Number of colours Nombre de coloris Aantal kleuren Anzahl der Farben | 3 |

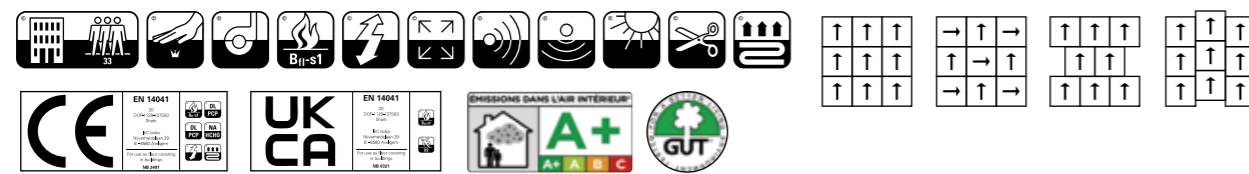
We reserve all rights for technical improvements. 05/2024 - SC065CTC066CUB6

Shark Carpet Tiles

Technical Specifications

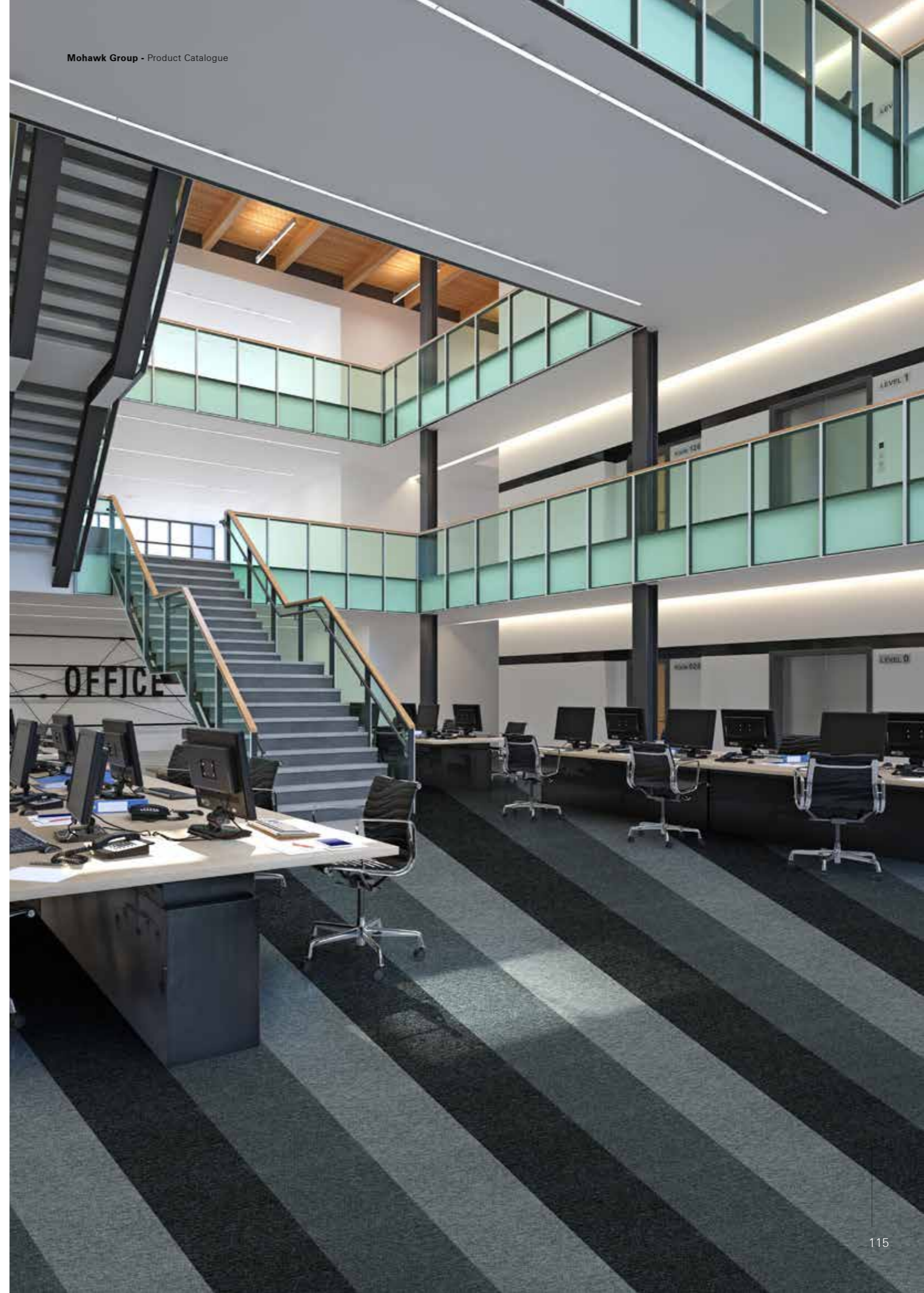
| | |
|---|--|
| Construction Structure Structuur Konstruktion | Tufted 1/10" gauge loop |
| Pile fibre composition Composition des fibres Poolmateriaal Material der Polnutzschicht | 100% solution dyed nylon |
| Secondary backing Envers Rug Beschichtung | Ecoflex™ Statera |
| Total weight Poids total Totaal gewicht Gesamtgewicht | +/- 3700 g/m ² |
| Pile weight Poids du velours Poolgewicht Poleinsatzgewicht | +/- 480 g/m ² |
| Total thickness Epaisseur totale Totale dikte Gesamtdicke | +/- 5,5 mm |
| Surface pile thickness Hauteur du velours Poolhoogte Poldicke | +/- 2,4 mm |
| Surface pile density Densité du velours Pooldichtheid Polrohndichte | +/- 0,108 g/cm ³ |
| Number of tufts Nombre de boucles Aantal noppen Noppenzahl | 184.500/m ² |
| Wear classification Classement d'usage Gebruiksklasse Beanspruchungsklasse | 33/LC1 (EN 1307) |
| Dimensional stability Stabilité dimensionnelle Dimensionele stabiliteit Dimensionsstabilität | ≤ 0,2% (EN 986) |
| Colour fastness to light Solidité des couleurs à la lumière Lichtbestendigheid van de kleuren Lichtechtheit | ≥ 7 |
| Colour fastness to water Solidité à l'eau Waterechtheid Wasserechtheit | ≥ 4 |
| Sound absorption Absorption phonique Geluidsabsorptie Schallabsorptionsgrad | 0,15 aw (EN ISO 354) |
| Impact sound reduction Réduction phonique aux bruits d'impacts Reductie contactgeluid Trittschallverbesserungsmaß | ΔLw = 27 dB (EN ISO 10140-3) |
| Permanent antistatic Antistatique permanent Permanent antistatisch Permanent antistatisch | ≤ 2 kV |
| Size & Packaging Dimensions & Emballage Formaat en verpakking Abmessungen & Verpackung | 50 x 50 cm 5 m ² /box 24 boxes/pallet |

We reserve all rights for technical improvements. 01/2023 - SC066RKC035BE



6F1C13B1

Photographic images are not representative due to variations in colour printing.
The representative samples shown are sectional definitions. For full design representation, please visit the website.





Technical Specifications

Spécifications techniques - Technische specificaties - Technische Spezifikationen

| | |
|---|----------------|
| Construction Structure - Structuur - Konstruktion | |
| Pile fibre composition Composition des fibres - Poolmateriaal - Material der Polnutzschicht | |
| Secondary backing Envers - Rug - Beschichtung | |
| Total weight Poids total - Totaal gewicht - Gesamtgewicht | |
| Pile weight Poids du velours - Poolgewicht - Poleinsatzgewicht | |
| Surface pile weight Poids du velours utile - Effectieve poolmassa - Polnutzschichtgewicht | |
| Total thickness Epaisseur totale - Totale dikte - Gesamtdicke | |
| Surface pile thickness Hauteur du velours - Poolhoogte - Poldicke | |
| Surface pile density Densité du velours - Pooldichtheid - Polrohndichte | |
| Number of tufts Nombre de boucles - Aantal noppen - Noppenzahl | |
| Wear classification Classement d'usage - Gebruiksklasse - Beanspruchungsklasse | EN 1307 |
| Castor chair suitability Résistance aux chaises à roulettes - Rolstoelgeschiktheid - Stuhlrolleneignung | EN 985 |
| Fire classification Comportement au feu - Brandgedrag - Brandklasse | EN 13501-1 |
| Dimensional stability Stabilité dimensionnelle - Dimensionele stabiliteit - Dimensionsstabilität | EN 986 |
| Colour fastness to light Solidité des couleurs à la lumière - Lichtbestendigheid van de kleuren - Lichtechtheit | EN ISO 105-B02 |
| Rubbing fastness Solidité au frottement - Wrijftechtheid - Reibechtheit | EN ISO 105-X12 |
| Colour fastness to water Solidité à l'eau - Waterrechtheid - Wasserechtheit | EN ISO 105-E01 |
| Thermal resistance Résistance thermique - Warmtedoorlaatweerstand - Wärmedurchlasswiderstand | ISO 8302 |
| Sound absorption Absorption phonique - Geluidsabsorptie - Schallabsorptionsgrad | EN ISO 354 |
| Impact sound reduction Réduction phonique aux bruits d'impacts - Reductie contactgeluid - Trittschallverbesserungsmaß | EN ISO 10140-3 |
| Permanent antistatic Antistatique permanent - Permanent antistatisch - Permanent antistatisch | ISO 6356 |
| Number of colours Nombre de coloris - Aantal kleuren - Anzahl der Farben | |
| Size & Packaging Dimensions & Emballage - Formaats en verpakking - Abmessungen & Verpackung | |
| GUT-Produs Number Numéro GUT Prodis - Nummer GUT Prodis - GUT-Produs Nummer | |
| Warranty years Garantie ans - Garantie in jaren - Garantie Jahren | |



Creative Spark

| |
|--|
| Tufted 1/10" gauge loop |
| 100% solution dyed nylon |
| EcoFlex™ Statera (modified bitumen, 70% recycled content) |
| ± 4100 g/m ² |
| ± 540 g/m ² |
| ± 370 g/m ² |
| ± 6,3 mm |
| ± 3,1 mm |
| ± 0,119 g/cm ³ |
| 176.300/ m ² |
| 33 / LC1 |
| A: intensive use |
| Bfl-s1 |
| ≤ 0,20% |
| ≥ 7 |
| ≥ 4 |
| ≥ 4 |
| 0,072 m ² .K/W |
| 0,15 aw |
| Hz 125 250 500 1000 2000 4000 as -0,01 0,00 0,06 0,17 0,25 0,34 |
| ΔLw = 32 dB |
| ≤ 2 kV |
| 32 |
| 50 x 50 cm 5 m ² /box - 24 boxes/pallet |
| 3AA1D4DF |
| 15 |

View

| |
|---|
| Tufted 1/12" gauge loop |
| 100% solution dyed nylon |
| EcoFlex™ Statera (modified bitumen, 70% recycled content) |
| ± 4400 g/m ² |
| ± 600 g/m ² |
| ± 388 g/m ² |
| ± 6,4 mm |
| ± 3,1 mm |
| ± 0,125 g/cm ³ |
| 229.500/m ² |
| 33 / LC1 |
| A: intensive use |
| Bfl-s1 |
| ≤ 0,2% |
| ≥ 7 |
| ≥ 4 |
| ≥ 4 |
| 0,067 m ² .K/W |
| 0,15 aw |
| Hz 125 250 500 1000 2000 4000 as 0,00 0,02 0,06 0,20 0,30 0,39 |
| ΔLw = 25 dB |
| ≤ 2 kV |
| 8 |
| 50 x 50 cm 5 m ² /box - 24 boxes/pallet |
| CAC6CFE5 |
| 15 |

Jute

| |
|---|
| Tufted 1/12" gauge loop |
| 100% solution dyed nylon |
| EcoFlex™ Statera (modified bitumen, 70% recycled content) |
| ± 4400 g/m ² |
| ± 600 g/m ² |
| ± 415 g/m ² |
| ± 6,4 mm |
| ± 3,2 mm |
| ± 0,127 g/cm ³ |
| 224.400/m ² |
| 33 / LC2 |
| A: intensive use |
| Bfl-s1 |
| ≤ 0,2% |
| ≥ 7 |
| ≥ 4 |
| ≥ 4 |
| 0,069 m ² .K/W |
| 0,15 aw |
| Hz 125 250 500 1000 2000 4000 aw 0,02 0,02 0,07 0,16 0,29 0,33 |
| ΔLw = 28 dB |
| ≤ 2 kV |
| 12 |
| 50 x 50 cm 5 m ² /box - 24 boxes/pallet |
| 94EFC68 |
| 15 |



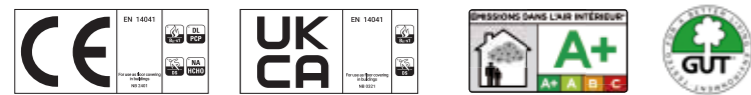


Technical Specifications

Spécifications techniques - Technische specificaties - Technische Spezifikationen

| | |
|---|----------------|
| Construction Structure - Structuur - Konstruktion | |
| Pile fibre composition Composition des fibres - Poolmateriaal - Material der Polnutzschicht | |
| Secondary backing Envers - Rug - Beschichtung | |
| Total weight Poids total - Totaal gewicht - Gesamtgewicht | |
| Pile weight Poids du velours - Poolgewicht - Poleinsatzgewicht | |
| Surface pile weight Poids du velours utile - Effectieve poolmassa - Polnutzschichtgewicht | |
| Total thickness Epaisseur totale - Totale dikte - Gesamtdicke | |
| Surface pile thickness Hauteur du velours - Poolhoogte - Poldicke | |
| Surface pile density Densité du velours - Pooldichtheid - Polrohndichte | |
| Number of tufts Nombre de boucles - Aantal noppen - Noppenzahl | |
| Wear classification Classement d'usage - Gebruiksklasse - Beanspruchungsklasse | EN 1307 |
| Castor chair suitability Résistance aux chaises à roulettes - Rolstoelgeschiktheid - Stuhlrolleneignung | EN 985 |
| Fire classification Comportement au feu - Brandgedrag - Brandklasse | EN 13501-1 |
| Dimensional stability Stabilité dimensionnelle - Dimensionele stabiliteit - Dimensionsstabilität | EN 986 |
| Colour fastness to light Solidité des couleurs à la lumière - Lichtbestendigheid van de kleuren - Lichtechtheit | EN ISO 105-B02 |
| Rubbing fastness Solidité au frottement - Wrijftechtheid - Reibechtheit | EN ISO 105-X12 |
| Colour fastness to water Solidité à l'eau - Waterrechtheid - Wasserechtheit | EN ISO 105-E01 |
| Thermal resistance Résistance thermique - Warmtedoorlaatweerstand - Wärmedurchlasswiderstand | ISO 8302 |
| Sound absorption Absorption phonique - Geluidsabsorptie - Schallabsorptionsgrad | EN ISO 354 |
| Impact sound reduction Réduction phonique aux bruits d'impacts - Reductie contactgeluid - Trittschallverbesserungsmaß | EN ISO 10140-3 |
| Permanent antistatic Antistatique permanent - Permanent antistatisch - Permanent antistatisch | ISO 6356 |
| Number of colours Nombre de coloris - Aantal kleuren - Anzahl der Farben | |
| Size & Packaging Dimensions & Emballage - Formaat en verpakking - Abmessungen & Verpackung | |
| GUT-Prodis Number Numéro GUT Prodis - Nummer GUT Prodis - GUT-Prodis Nummer | |
| Warranty years Garantie ans - Garantie in jaren - Garantie Jahren | |

| Clay | Clay Create | Metallic Clay |
|---|---|---|
| Tufted 1/12" gauge loop | Tufted 1/12" gauge loop | Tufted 1/12" gauge loop |
| 100% solution dyed nylon | 100% solution dyed nylon | 100% solution dyed nylon |
| EcoFlex™ Statera (modified bitumen, 70% recycled content) | EcoFlex™ Statera (modified bitumen, 70% recycled content) | EcoFlex™ Statera (modified bitumen, 70% recycled content) |
| ± 4495 g/m ² | ± 4495 g/m ² | ± 4495 g/m ² |
| ± 600 g/m ² | ± 600 g/m ² | ± 600 g/m ² |
| ± 384 g/m ² | ± 384 g/m ² | ± 384 g/m ² |
| ± 7,1 mm | ± 7,1 mm | ± 7,1 mm |
| ± 3,4 mm | ± 3,4 mm | ± 3,4 mm |
| ± 0,115 g/cm ³ | ± 0,115 g/cm ³ | ± 0,115 g/cm ³ |
| 205.000/ m ² | 205.000/ m ² | 205.000/m ² |
| 33 / LC1 | 33 / LC1 | 33 / LC1 |
| A: intensive use | A: intensive use | A: intensive use |
| Bfl-s1 | Bfl-s1 | Bfl-s1 |
| ≤ 0,2% | ≤ 0,2% | ≤ 0,2% |
| ≥ 7 | ≥ 7 | ≥ 7 |
| ≥ 4 | ≥ 4 | ≥ 4 |
| ≥ 4 | ≥ 4 | ≥ 4 |
| 0,076 m ² .K/W | 0,076 m ² .K/W | 0,076 m ² .K/W |
| 0,15 aw | 0,15 aw | 0,20 aw |
| Hz 125 250 500 1000 2000 4000 as 0,02 0,03 0,07 0,19 0,34 0,57 | Hz 125 250 500 1000 2000 4000 as 0,02 0,03 0,07 0,19 0,34 0,57 | Hz 125 250 500 1000 2000 4000 as 0,02 0,02 0,08 0,21 0,32 0,45 |
| ΔLw = 28 dB | ΔLw = 28 dB | ΔLw = 26 dB |
| ≤ 2 kV | ≤ 2 kV | ≤ 2 kV |
| 12 | 12 | 9 |
| 25 x 100 cm 5 m ² /box - 24 boxes/pallet | 25 x 100 cm 5 m ² /box - 24 boxes/pallet | 25 x 100 cm 5 m ² /box - 24 boxes/pallet |
| E4C2F79C | 5E8698AB | 9ADE6ED5 |
| 15 | 15 | 15 |



Exclusive Distributor:

FLOORWORLD™ LLC
THE BIGGEST FLOORING COMPANY IN THE MIDDLE EAST

TOLL FREE : 800 FLOOR (35667)

www.floorworld.com